

**TO: James L. App, City Manager**  
**FROM: Doug Monn, Public Works Director**  
**SUBJECT: Award Contract to Morro Group for CEQA documentation services associated with the upgrade of the City Wastewater Treatment Plant**  
**DATE: November 4, 2008**

---

**NEEDS:** For the City Council to consider appropriating funding and authorizing CEQA environmental investigation and documentation to run parallel with the design process for upgrade of the City Wastewater Treatment Plant located at 3200 Sulfur Springs Road.

- FACTS:**
1. The City has operated a wastewater treatment plant at 3200 Sulfur Springs Road since the 1950s.
  2. The plant discharge permit is regulated by the Regional Water Quality Control Board (RWQCB).
  3. The Regional Water Quality Control Board issued the most recent permit in 2004.
  4. This 2004 permit contains discharge requirements that, as a result of its age, the treatment plant finds difficult to meet.
  5. On May 20, 2008, City Council awarded a contract to Black and Veatch to complete a feasibility study and 30% design drawings for possible rehabilitation of the Waste Water Plant.
  6. In order to complete the design and allow discussion with the State of California regarding possible finance options, the City must complete a California Environmental Quality Act (CEQA) review for the project.
  7. To secure the resources necessary to facilitate the CEQA process, staff submitted "Request for Proposal" packages to six (6) reputable environmental consulting firms.
  8. The City received five (5) proposals to prepare the CEQA-Plus investigations. The companies and costs were as follows:

Entrix	\$221,072
Padre & Associates	\$ 57,493
Quad-Knoph	\$ 41,157
Jones & Stokes	\$ 38,853
The Morro Group	\$ 25,588

9. Entrix of Ventura California's proposal contained greatest fixed cost (\$221,072). Their relevant experience (offshore drilling platforms and a nuclear generating station) exceeds that necessary to complete the scope associated with the City's WWTP. It also results in staff costs nearly three times that of the Morro Group.
10. Morro Group, of San Luis Obispo, submitted the proposal with the lowest "fixed fee" cost of \$25,588. The Morro Group has extensive experience with CEQA

investigations and as a result of their being a local firm, CEQA documentation in the Central Coast area.

11. The proposal from Morro Group includes the provision of a Biological Investigation Report, a Cultural Resource Assessment and an Air Quality Assessment in support of the CEQA-Plus document.
12. Staff is requesting an allocation of \$28,588 (\$25,588, plus a \$3,000 contingency)

**ANALYSIS &  
CONCLUSION:**

The Sulfur Springs Road Treatment Plant is a vital asset to the City. Portions of the plant are over 50 years old. The City has already hired Black and Veatch to perform the engineering services for the development of treatment plant upgrades. A CEQA plus document will be required to complete the final design and as a condition of seeking any available grants or State funding. The document will include a biological study that examines both state and federally protected species, a cultural resources study that also includes an analysis of historic buildings, and an air impact study that meets both state and federal guidelines. The Morro Group possesses extensive experience in the preparation of the required documents and has provided the City with the lowest proposed cost to complete the process.

**POLICY  
REFERENCE:**

**FISCAL IMPACT:** A CEQA plus document and Mitigated Negative Declaration will be necessary to complete the design process and specifications for the Waste Water Treatment Plant rehabilitation. The Morro Group proposes to draft the necessary CEQA documentation at a cost not to exceed \$25,588. Staff has asked that a \$3,000 contingency be authorized should an unforeseen condition occur during the CEQA process. The cost for this service would be paid from the Sewer Enterprise Fund.

- OPTIONS:**
- a. Adopt Resolution No. 08-### appropriating \$28,588 (\$25,588, plus a \$3,000 contingency) from Sewer Enterprise Funds to Budget No. 601-910-5224-683 and authorize the City Manager to enter into a contract with Morro Group to provide CEQA Documentation Services associated with the future rehabilitation of Paso Robles Wastewater Treatment Plant.
  - b. Amend, modify, or reject the above option.

Attachments (2)

- 1) Proposal from Morro Group
- 2) Resolution

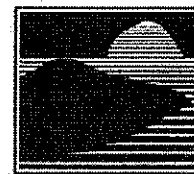
PROPOSALS FROM  
ENTRIX,  
PADRE & ASSOCIATES  
QUAD-KNOPH,  
JONES & STOKES

AVAILABLE FOR PUBLIC REVIEW

ON FILE WITH THE PASO ROBLES CITY CLERK AT  
1000 SPRING STREET, PASO ROBLES, CA 93446  
805-237-3960

September 29, 2008

Kris Olson, PE  
Cornerstone Engineering, Inc.  
208 Oak Street  
Bakersfield, CA 93311



**MORRO  
GROUP, INC.**  
A DIVISION OF  
**SWCA**  
ENVIRONMENTAL CONSULTANTS

**SUBJECT** *Proposal to Provide CEQA Documentation Services for the Paso Robles Wastewater Treatment Plant Upgrade Project (SWCA Proposal SLO 135)*

Dear Mr. Olson:

Thank you for requesting Morro Group, a Division of SWCA (SWCA) to prepare a proposal for CEQA documentation services for the Paso Robles Wastewater Treatment Plant Upgrade in Paso Robles, San Luis Obispo County, California. The proposal is attached for your review.

The SWCA team will be lead by Mary Reents, Senior Consultant, and includes biological and air quality specialists from the San Luis Obispo office and our cultural resources team from the Sacramento office. We are highly qualified to perform all duties related to the completion of the technical studies and environmental determination to meet State Revolving Fund CEQA-Plus requirements. We thoroughly understand the intricacies of preparing technical studies to meet the standards of the City of Paso Robles.

Our team will deliver to Cornerstone Engineering and the City of Paso Robles:

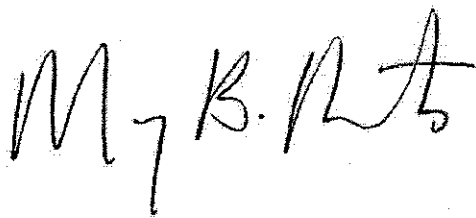
- **Experienced Cultural and Biological Resources and Air Quality Staff.** SWCA employs over 100 cultural resource professionals, including Architectural Historians, Ethnographers, Cultural Anthropologists, Historians, and Pre-historic and Historic Archaeologists who have expertise in cultural resources and the federal and state regulations that protect them. SWCA environmental specialists and planners have prepared hundreds of environmental review documents, including Initial Studies and Mitigated Negative Declarations in compliance with CEQA Guidelines.
- **Experience with Wastewater Treatment Facilities.** SWCA's San Luis Obispo office has prepared environmental documents on several wastewater treatment plant projects, including the Oak Shores Wastewater Treatment Plant Upgrade EIR, the City of Pismo Beach Wastewater Treatment Facilities Upgrade EIR, and the Coalinga Wastewater Treatment Plant Program EIR.
- **100% committed project team.** SWCA's use of committed, designated staff with the time available to complete tasks assures project success. SWCA does not substitute staff on projects without prior client approval. Our staff of local cultural, biological resource, and air quality professionals assures that all task orders are completed in an expedited and cost effective manner.
- **Expertise with state and federal environmental regulatory processes.** SWCA's expertise with the CEQA process and other regulatory processes (including USACE, California Department of Fish and Game, and U.S. Fish and Wildlife Service) will ensure that all work products meet all relevant regulatory agency requirements. SWCA is a recognized National leader in Section 106 and

CEQA/NEPA training, and conducts multiple training sessions to government agencies and private consultants each year.

We are looking forward to assisting Cornerstone and the City of Paso Robles on the upgrade of their wastewater treatment system. If you have any questions, please don't hesitate to contact me at (805) 543-7095, Extension 103.

Sincerely,

MORRO GROUP/SWCA

A handwritten signature in black ink, appearing to read "Mary B. Reents". The signature is stylized and cursive.

Mary B. Reents  
Senior Consultant

---

City of Paso Robles  
Wastewater Treatment Plan Upgrade Project  
San Luis Obispo County, California

Proposal to Provide

**CEQA DOCUMENTATION  
SERVICES**

Prepared for:

Kris Olson, PE  
Cornerstone Engineering, Inc.  
208 Oak Street  
Bakersfield, CA 93311  
kao@cornerstoneeng.com

Derrill G. Whitten, Jr., PE  
Cornerstone Engineering, Inc.  
208 Oak Street  
Bakersfield, CA 93311  
dgw@cornerstoneeng.com

Prepared by:



September 29, 2008

PROPOSAL TO PROVIDE CEQA DOCUMENTATION SERVICES FOR THE CITY OF PASO ROBLES  
WWTP UPGRADE PROJECT – SAN LUIS OBISPO COUNTY, CALIFORNIA

---

## TABLE OF CONTENTS

SECTION A. INTRODUCTION .....	1
SECTION B. SUBCONTRACT TERMS AND CONDITIONS .....	1
SECTION C. CEQA CONSULTANT ORGANIZATION .....	1
1. Brief Introduction to SWCA .....	1
2. Project Team and Client Coordination .....	2
3. Consultant Project Team .....	2
a. Project Management .....	2
b. Mitigated Negative Declaration .....	3
c. Biological Assessment .....	3
d. Air Quality Assessment .....	4
e. Cultural Resources Assessment .....	7
f. Document Support Team .....	8
SECTION D. SCOPE OF WORK AND APPROACH .....	8
1. Mitigated Negative Declaration .....	8
2. Biological Assessment .....	9
a. Literature Review .....	9
b. Site Visit .....	9
c. Biological Assessment Report .....	9
3. Air Quality Assessment .....	9
a. Air Quality Conformity Analysis .....	10
4. Cultural Resources Assessment .....	10
a. Cultural Resources Records Search .....	10
b. Prepare Area of Potential Effects Map .....	11
c. Initial Native American Consultation (NAHC) .....	11
d. Cultural Resources Field Survey .....	11
e. Cultural Resources Technical Report .....	11
SECTION E. REFERENCES .....	12
1. County Service Area 7A (Oak Shores) Wastewater Treatment Plant Upgrade EIR .....	12
2. Coalinga Wastewater Treatment Plant Program EIR .....	12
SECTION F. PROPOSED CEQA DOCUMENTATION SCHEDULE .....	13
SECTION G. PROPOSED BUDGET .....	14
1. Cost Summary .....	14
a. Document Production Costs .....	14
b. SWCA Hourly Rates .....	14



PROPOSAL TO PROVIDE CEQA DOCUMENTATION SERVICES FOR THE CITY OF PASO ROBLES  
WWTP UPGRADE PROJECT – SAN LUIS OBISPO COUNTY, CALIFORNIA

---

TABLES

Table 1.	CEQA Documentation Preparation / Target Dates Schedule.....	13
Table 2.	Cost Estimate Summary.....	14
Table 3.	Cost Estimate.....	15
Table 4.	SWCA Fee Schedule.....	17

FIGURES

Figure 1.	Project Team Organization.....	5
-----------	--------------------------------	---

APPENDICES

Appendix A.	Sample Certificate of Insurance
Appendix B.	Project Team Resumes
Appendix C.	Representative Experience
Appendix D.	SWCA Capabilities Cut Sheets

## **SECTION A. INTRODUCTION**

Morro Group, a Division of SWCA (SWCA), is pleased to submit this proposal to Cornerstone Engineering, Inc. to provide CEQA Documentation Services for the City of Paso Robles Wastewater Treatment Plant Upgrade Project (project), in Paso Robles, California. Per the request for proposal (RFP) received via email on September 4, 2008, it is our understanding that the upgrade project will improve the quality of effluent and allow the plant to meet new standards for effluent.

This proposal addresses identification of potential environmental impacts through the preparation of a mitigated negative declaration, with additional studies including:

- A biological assessment that covers Endangered Species Act sensitive species;
- A Clean Air Act general conformity analysis; and,
- A cultural resources assessment which addresses the National Historic Preservation Act.

These additional studies are necessary to meet CEQA-Plus requirements for this project and to obtain State Revolving Fund (SRF) funding. SRF funding is administered by the State Water Resources Control Board in California. CEQA-Plus requirements have been developed by the Environmental Protection Agency (EPA) and are intended to supplement the CEQA *Guidelines* with additional and specific requirements related to federal regulations.

## **SECTION B. SUBCONTRACT TERMS AND CONDITIONS**

SWCA has reviewed all standard contract provisions required by the City of Paso Robles (City) and the draft consultant's agreement attached to the RFP. SWCA accepts and will comply with the terms and conditions of the contract, and does not desire any contract revisions. In response to the insurance requirements of the contract, SWCA has included a sample Certificate of Insurance as Appendix A.

## **SECTION C. CEQA CONSULTANT ORGANIZATION**

### **1. BRIEF INTRODUCTION TO SWCA**

As Morro Group, Inc., we have provided a wide range of environmental consulting services to private and public sector clients on the Central Coast since 1984, and have operated out of an office in the City of San Luis Obispo for over ten years. We specialize in environmental document preparation, biological investigations, construction and mitigation monitoring services, agency permitting, and preparation, implementation, and monitoring of restoration and revegetation programs. We have completed an average of over one hundred projects per year over the last 20 years, and have earned a reputation for completing a wide array of difficult projects in a timely and cost effective manner. SWCA's Office Director, Bill Henry, and Senior Consultant, Mary Reents, have directed all of the company's projects and maintain an emphasis on objectivity and feasible solutions to difficult issues.

In January, 2008, Morro Group merged with the larger environmental consulting firm SWCA Environmental Consulting. SWCA has 23 offices throughout the western United States, and focuses on biological and cultural resources work. The Morro Group staff and office location are SWCA's fourth office in California. We are very excited that this merger has taken place and we anticipate that SWCA's strengths in the biological and cultural resources field will improve and enhance our capabilities. With the merger, the quality and timeliness of work that the City has come to expect will continue. All of our staff will remain, including Mr. Henry and Ms. Reents, the former owners of Morro Group, Inc. One of the possible benefits of the merger to proposed project may include a better in-house ability to address any unforeseen challenges that may arise.

Morro Group, prior to being acquired by SWCA, has prepared a variety of environmental documents for a range of public agencies of varying size and complexity over the last 24 years, and looks forward to continuing to provide these services as SWCA for many years to come. These projects have included Environmental Impact Reports (EIRs), Environmental Impact Studies (EISs), Initial Studies (ISs), Expanded Initial Studies (ExISs), Mitigated Negative Declarations (MNDs), Mitigation Monitoring Programs (MMPs), Natural Environment Study Reports (NESRs), Biological Assessments (BAs), Biological Resource Survey Reports (BRSRs), Biological Constraints Analyses, Wetland Delineations, Habitat Mitigation and Monitoring Plans (HMMPs), Environmental Quality Assurance Plans (EQAPs), Revegetation and Restoration Plans, and Construction Monitoring. Our merger with SWCA will provide the City with our firm's excellent training staff headed by Al Herson, who is most noted for his publications in the environmental and planning field.

Our staff provides professional experience in the areas of environmental studies and management, wildlife biology, botany, soil science, wetland science, agency permitting, restoration and revegetation, noise and air quality modeling, visual resource assessment, and geographic information mapping. Field mapping is conducted using a Trimble Pathfinder PRO Global Positioning System and can easily be used along with AutoCAD, GIS, and ArcView. Company policy is to handle as many of the technical support tasks in-house so as to reduce overhead costs and maintain the highest possible level of quality control.

## **2. PROJECT TEAM AND CLIENT COORDINATION**

All project team communications will run through Mary Reents, who will serve as the Project Manager under this contract. All issues at the project team level will be synthesized by the Project Manager and forwarded, verbally or via email to the City and/or Cornerstone Project Manager (refer to Figure 1 for project team organization). Because we believe that the City and Cornerstone should always be able to contact a manager from the project team, the Project Manager will be available to respond to any concerns of the City and/or Cornerstone project team throughout the duration of the contract. The Project Manager will be responsible for supervising the day-to-day activities of the project team, as well as being responsible for liaison, document review, budgeting, and public presentations as well as the preparation of legally defensible environmental documents and reports.

## **3. CONSULTANT PROJECT TEAM**

### **a. Project Management**

#### ***Mary B. Reents, Principal-in-Charge and Senior Consultant***

Mary Reents will serve as the Project Manager. Ms. Reents has been managing and preparing environmental studies following federal and state guidelines since 1972. She is a 1971 graduate of Stanford University in Environmental Psychology and has continually taken graduate courses and seminars on a variety of environmental review and management topics. Ms. Reents is a member of AEP, and serves as the Director-at-Large for the state of California. Ms. Reents has demonstrated her ability to provide strong project management and specialized expertise in preparation of EIRs, socioeconomic studies, feasibility studies, monitoring studies, restoration and revegetation projects, and federal and state compliance documents. As Senior Consultant with SWCA, she is given the role of senior project director with authority to represent the firm and to execute corporate contracts. As a Project Manager for SWCA, Ms. Reents is responsible for client liaison, agency liaison, budget preparation, contract administration, project planning, staffing, and quality control for projects under her direct administration. She has managed the preparation of over 500 environmental documents throughout the western United States, either as President of Morro Group, Inc. or as a project manager for VTN Irvine, Inc., VTN Colorado, Inc., and Sterns-Roger, Inc. She has also served as the environmental coordinator for the County of San Luis Obispo and as the Coastal Planner for the City of Pismo Beach. Currently, Ms. Reents is assisting the Department of Public Works on several projects, including providing document review and consultation for the Los Osos Wastewater Treatment Plant EIR, acting as Principal-in-Charge for the preparation of the Arroyo Grande Creek Waterway Management Program and EIR, and is directing the biological survey work for the Halcyon Bridge Replacement Project. She is also overseeing other Public Works, Environmental

PROPOSAL TO PROVIDE CEQA DOCUMENTATION SERVICES FOR THE CITY OF PASO ROBLES  
WWTP UPGRADE PROJECT – SAN LUIS OBISPO COUNTY, CALIFORNIA

---

Division, and Parks Department on-call contracts, conducted by SWCA project managers. In addition, Ms. Reents is directing several large environmental projects, including the Coalinga General Plan Update Master EIR; the West Hills Community College District Farm of the Future Master EIR; the Los Gatos Estates Project EIR in Coalinga; the five-year Madonna Enterprises/Costco Wetlands Restoration Program; and the five-year Caltrans Central District Generalist Environmental Services Agreement as a sub-consultant to Parsons Transportation Group. Her past experience has included EIRs and statements on electrical generating facilities during her work effort in the 1970s, including natural gas, coal, nuclear and combined generation power facilities in California, Utah, North Dakota, and Nebraska. Ms. Reents focuses her work effort on mentoring staff in CEQA-related issues and project management.

**b. Mitigated Negative Declaration**

***Shawna Scott, Senior Planner***

Ms. Scott will prepare the Initial Study/Mitigated Negative Declaration. Ms. Scott has over eight years experience implementing CEQA for cities, communities, and rural areas within San Luis Obispo, Fresno, Ventura, Santa Barbara, and Los Angeles Counties. Ms. Scott is responsible for managing contracts with the County of San Luis Obispo Environmental and Resource Management Division, Planning and Building Department, General Services Department Parks Division, and Public Works Department to prepare environmental documents for both private and public projects. Ms. Scott has prepared environmental and planning documents including environmental impact reports, mitigated negative declarations, expanded initial studies, preliminary environmental analysis reports, mitigation and monitoring plans, consistency with plans and policies analysis, CEQA findings and field monitoring reports, staff reports, hearing presentations, and has prepared over a hundred environmental documents for a variety of projects including general plan and ordinance amendments, grading plans, habitat restoration and enhancement, residential development, commercial and industrial development, public facilities, wineries, community parks, schools, and transportation projects. Ms. Scott also manages the preparation of all MNDs in the San Luis Obispo office. Recent documents prepared by Ms. Scott include: County Service Area 7 (Oak Shores) Wastewater Treatment Plant Upgrade Project EIR, Busick Tract Map EIR, Fiscalini Ranch Preserve Master EIR, Laetitia Agricultural Cluster, Tract Map, and Development Plan EIR, and Santa Maria Levee Upgrade MND.

**c. Biological Assessment**

***Barrett Holland, Biologist***

Mr. Holland will prepare the biological assessment. Mr. Holland has over four years of experience as a biologist and field botanist in California, and is a Wetland Training Institute certified wetland delineator. He has experience in compliance monitoring activities for numerous small- and large-scale construction and remediation projects throughout California, working closely with team members and regulatory agencies. Mr. Holland has experience assisting in the preparation of technical reports, including preliminary environmental constraints analyses, survey reports, Endangered Species Act (ESA) Section 7 Biological Assessments, CEQA documentation, restoration plans, mitigation and monitoring plans, and wetland delineations. Mr. Holland has extensive experience conducting surveys for various special-status plant and animal species including: protocol-level surveys for burrowing owls (*Athene cunicularia*) in Ventura, Los Angeles, and Riverside Counties, as well as surveys and relocation programs for silvery legless lizards (*Anniella pulchra pulchra*) in Ventura County. He has also participated in mitigation efforts for various special-status plants including, the Santa Suzanna tarplant (*Deinandra minthornii*), slender mariposa lily (*Calochortus clavatus* ssp. *gracilis*), Ventura marsh milk-vetch (*Astragalus pycnocephalus* var. *lanosissimus*), and Coachella milk-vetch (*Astragalus lentiginosus* var. *coachellae*). Mr. Holland has become proficient in the use of the Trimble GeoXT Global Positioning System (GPS) and regularly utilizes GPS to delineate wetlands and waters of the U.S., to map native protected trees, to delineate plant communities, and to document special-status plant and animal locations. GPS has also been used as a navigational aid to relocate previously surveyed resource positions. Mr. Holland has been involved with various environmental monitoring projects related to special-status species and sensitive habitats, soil remediation, road and bridge construction projects, species relocation, and mitigation project success evaluation.

PROPOSAL TO PROVIDE CEQA DOCUMENTATION SERVICES FOR THE CITY OF PASO ROBLES  
WWTP UPGRADE PROJECT – SAN LUIS OBISPO COUNTY, CALIFORNIA

---

Representative projects include construction monitoring for the McGrath Wetland Creation and Dune Enhancement Plant, North Shore at Mandalay Mitigation/Soil Remediation, Soule Creek Golf Course Bridge, and California Lutheran University Riparian Restoration.

***Bob Sloan, Senior Biologist***

Mr. Sloan will review the biological assessment report. Mr. Sloan has over fifteen years of professional experience involving botanical evaluations, habitat restoration, and natural resource management, and over nine years experience in riparian and water quality related planning, analysis, regulatory issues, and environmental monitoring. He specializes in riparian and wetland habitats, botany/plant taxonomy, and site mitigation/restoration, with extensive experience performing wetland delineations, special status plant and animal surveys, biological site assessments, mitigation plan preparation and environmental and construction monitoring. Mr. Sloan has expertise in botany, soil science, watershed management, wetland regulations, and California plant communities and associated wildlife habitats. Mr. Sloan regularly prepares biological evaluations including riparian and wetland inventories, rare plant surveys and habitat assessments for numerous projects in the Central Coast area, using agency-approved methodologies. Mr. Sloan also regularly writes environmental documents for various agencies and clients in a multitude of formats. Recent projects that Mr. Sloan has completed work for include: Native Grassland Habitat Assessment for the Losson Property, Santa Ynez, Santa Barbara County; Cholame Valley Road Wetland Delineation, San Luis Obispo County; Avila Valley Inn Wetlands Study, San Luis Obispo County; University of California, Santa Barbara Long Range Development, Santa Barbara County; and, Los Osos Wastewater Treatment Plant EIR On-Call Services, San Luis Obispo County.

d. **Air Quality Assessment**

***David Morrow, AICP, Air Quality Specialist***

Mr. Morrow will perform the Clean Air Act general conformity analysis and prepare the air quality section of the Mitigated Negative Declaration and Mitigation and Monitoring Plan. Mr. Morrow has a broad range of experience in environmental analysis. He is a published researcher on air pollution topics and has taught university-level classes in environmental impact analysis and air quality. Mr. Morrow's technical expertise in air quality and noise analysis includes the following: performed noise studies for numerous projects located near major highway and in highly varied outdoor and industrial environments, prepared community noise contours, projected future noise levels created by traffic volume increases, prepared project-level and community noise plans with appropriate mitigations (e.g., calculated sound wall heights), authored models for motor vehicles emission reductions through systematic controls (such as stop light synchronization), performed urban bus alternative fuel studies, conducted dispersion modeling highway construction programs, and performed fuel studies for locomotive emissions. Mr. Morrow has extensive experience evaluating environmental constraints, permitting and siting concerns, and presenting to public agencies and community groups. He was the air district representative to technical transportation advisory committees in several metropolitan planning organizations and is well-versed in the RTP process. This experience, coupled with his extensive CEQA experience makes him an ideal leader for the project team. Mr. Morrow is the lead planner for the entire SWCA company, (600 professionals) for climate change and green house gas reduction strategies Mr. Morrow has worked on greenhouse gas (GHG) reduction strategies since the early 1990s. He has developed and successfully implemented GHG reduction strategies at both the project and plan level.

PROPOSAL TO PREPARE A PROGRAMMATIC ENVIRONMENTAL IMPACT REPORT FOR THE REGIONAL TRANSPORTATION PLAN – SAN LUIS OBISPO COUNTY, CALIFORNIA

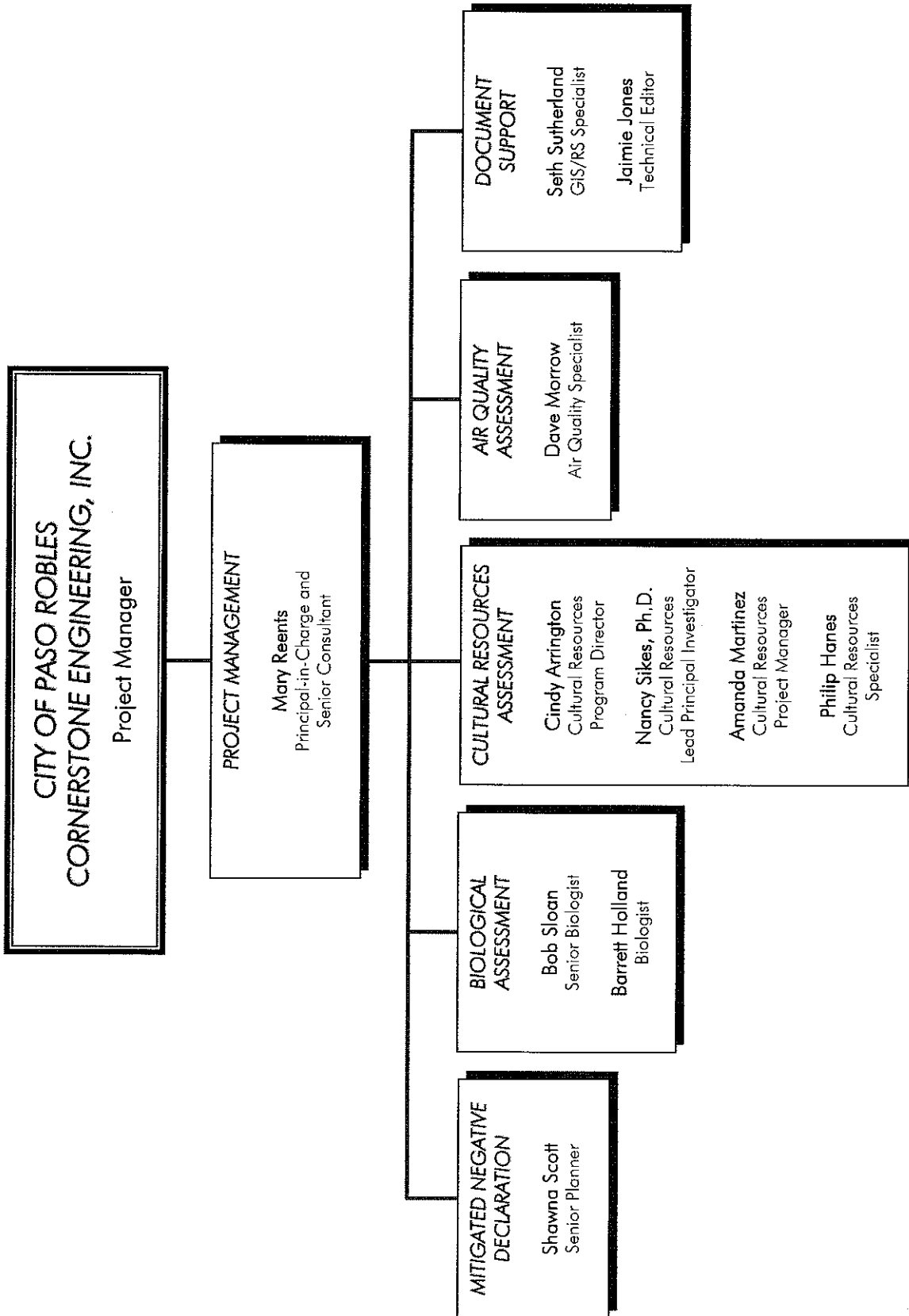


FIGURE 1. Project Team Organization

PROPOSAL TO PROVIDE CEQA DOCUMENTATION SERVICES FOR THE CITY OF PASO ROBLES  
WWTP UPGRADE PROJECT – SAN LUIS OBISPO COUNTY, CALIFORNIA

---

Back of Figure 1

e. **Cultural Resources Assessment**

***Amanda Martinez, RPA, Cultural Resources Project Manager***

Amanda Martinez will prepare the cultural resources technical report. Ms. Martinez is a cultural resources project manager for SWCA's California offices, with more than three years of management experience. Her professional experience encompasses a wide range of activities in the field, laboratory, and office, dealing with precontact, protohistoric, and historic resources. Her field experience includes an extensive background in the management of cultural resources compliance for large-scale seismic projects, military reservations, and artifact analysis. Ms. Martinez has experience in team management in the environmental profession; expertise in project performance and compliance with federal, state, and local regulations; implementation of environmental mitigation monitoring plans for complex projects; preparation of reports; direction of cultural resources surveys; and coordination with Native American groups.

***Philip Hanes, Cultural Resources Specialist***

Mr. Hanes will perform the cultural resources field survey. Mr. Hanes is the archaeological field director in SWCA's Sacramento office and has nearly three years experience in archaeological fieldwork. His field experience includes seismic and block survey, excavation of archaeological sites, digital site mapping, field team management, and pipeline construction monitoring. In the lab, he has performed cataloging and analysis of artifacts recovered from excavations of archaeological sites. He also assisted in the creation of a new and more efficient system for cataloging and analyzing artifacts. Mr. Hanes has helped write and has co-authored final reports for completed projects.

***Nancy Sikes, Ph.D., RPA, Cultural Resources Principal Investigator***

Dr. Nancy Sikes will review the cultural resources technical report and prepare the cultural section of the Mitigated Negative Declaration and Mitigation and Monitoring Plan. Dr. Sikes is the Principal Investigator for the Cultural Resources Program for all of SWCA's California. She is an archaeologist with more than 25 years of experience in a wide range of world areas and research settings. Dr. Sikes is certified by the Register of Professional Archaeologists and the County of Orange, as a Cultural Resources Specialist by the California Energy Commission, by the Nevada and Utah State Antiquities Sections and by the BLM in California, Oregon, Utah, and Washington. Dr. Sikes has attended workshops on federal (NHPA, NEPA) and California (CEQA, SB 18) laws, as well as on archaeological prospection (remote sensing). Dr. Sikes has been a principal investigator, senior scientist, and/or project manager for more than 15 years. She has participated in all aspects of cultural resource management projects throughout northern and southern California, Nevada, and Utah.

***Cindy Arrington, RPA, Cultural Resources Program Director***

Ms. Arrington is a historical archaeologist and cultural resources Program Director for SWCA California offices with more than 13 years of professional experience, specializing in National Historic Preservation Act (NHPA) Section 106 compliance and CEQA and NEPA services. Ms. Arrington has also lent her expertise to managing large-scale, multifaceted projects for city, state, and federal agencies, as well as for private firms. Her talent for mobilizing the cooperation of diverse staff, agency personnel, and clients lends itself well to the prevention and resolution of problems and conflicts. She has ensured regulatory compliance and proper mitigation of prehistoric, historic, and natural resources for large-scale construction and development projects throughout California. Ms. Arrington has extensive experience in multi-disciplinary team management in the environmental profession. Expertise in project performance and compliance with federal, state, and local regulations; implementation of environmental mitigation monitoring plans for complex construction projects; preparation of reports; and direction of cultural resources surveys, excavation, and coordination with native American groups.



**f. Document Support Team**

***Seth Sutherland, GIS/RS Specialist***

Mr. Sutherland will manage GPS data collected at the project site and prepare maps and graphics for the cultural and biological survey reports. Mr. Sutherland has over 15 years of experience in GIS applications and spatial analysis supporting consultants, utilities, cities, counties, and state agencies. Mr. Sutherland has managed GIS projects for planning, resource management, and web information services from California to Florida, and Sakhalin Island, Russia, to Bay of Guayaquil, Ecuador. His skills provide valuable support for assessment of development impacts, and spatial analysis for various environmental documents. Experience in environmental sciences, cultural studies, geotechnical sciences, civil engineering, planning, and landscape architecture give Mr. Sutherland a broad experience in the maintenance and analysis of these geospatial data that he supports and maintains. He has worked closely with a large variety of disciplines consolidating environmental and infrastructure data for use in GIS and cartographic applications. He has directed large scale field surveys covering hundreds of miles of Right of Way studies, and developed automated mapping and reporting utilities to generate large volume graphic and tabular databases. Recent projects that Mr. Sutherland has completed work for include: Bob Jones Pathway NEPA and CEQA Studies PS-891, Gilardi Road Bridge Replacement Project NES/BRSR, T.O. 42 - Olancho Cartago 4-Lane Project Bio Studies, AT&T Cable Pull, and Cold Canyon Landfill Expansion EIR, San Luis Obispo County.

***Jaimie Jones, Technical Editor***

Ms. Jones will ensure document quality control and be responsible for compilation of final documents. Ms. Jones has four years experience compiling a variety of environmental documents including EIRs, annual monitoring reports, Natural Environment Study Reports, and public record requests. She is an experienced technical editor and has provided document preparation assistance on a variety of CEQA and NEPA environmental documents, including NESs and BAs. Ms. Jones is also experienced in the preparation of Mitigated Negative Declarations. Recent projects that Ms. Jones has completed work for include: Coalinga General Plan Update Master EIR, Cold Canyon Landfill Expansion EIR, Fiscalini Ranch EIR, and Oak Shores Wastewater Treatment Plant Upgrade Environmental Impact Report.

**SECTION D. SCOPE OF WORK AND APPROACH**

SWCA has prepared the following scope of work in response to the specific tasks and responsibilities requested by the City of Paso Robles for the CEQA-Plus requirements for the Paso Robles Wastewater Treatment Plant Upgrade Project, including Biological Resources, Cultural Resources, and Air Quality Investigations. Funding of the project through the State Revolving Fund (SRF) program requires an environmental determination document (e.g., mitigated negative declaration), and additional studies that address the Federal Endangered Species Act, Federal General Conformity Rule for the Federal Clean Air Act, and the National Historic Preservation Act. Obtainment of SRF funds by the City will require focused surveys for sensitive and protected archaeological and biological resources as well as air quality analysis.

**1. MITIGATED NEGATIVE DECLARATION**

During preparation of the Initial Study (IS) Checklist associated with the environmental determination, agency referral packages will be prepared including a written project description and associated figures (e.g., vicinity map, conceptual site plan, habitat mapping). Referral packages will be sent to state and local affected agencies and advisory groups including, but not limited to: California Department of Fish and Game (CDFG), California Coastal Commission, San Luis Obispo County Air Pollution Control District (APCD), California Department of Forestry and Fire Protection (CAL FIRE), and the Native American Heritage Commission. We anticipate that meetings with key resource agency staff such as CDFG and USFWS would be required during the Initial Study process to identify potential impacts and mitigation measures related to sensitive habitats, plants, and wildlife.

The City is the CEQA lead agency for the proposed project. Based on preliminary information, we anticipate that a Mitigated Negative Declaration (MND) will be the appropriate CEQA environmental document for the proposed project. The IS/MND will include all project-specific information outlined in the SWRCB Environmental Review Process Guidelines for State Revolving Fund Applicants (September 2004). Sections of the MND covering air quality and biological and cultural resources will be based on technical reports as described below. If at any time potentially significant, adverse, unavoidable impacts are identified, we will contact you immediately. Preparation of the MND will include a field site inspection and preparation of an Initial Study Checklist, Notice of Determination/Coversheet, California Department of Fish and Game environmental filing fee sheet, Mitigation and Monitoring Plan, Notice of Completion form, and associated figures.

## **2. BIOLOGICAL ASSESSMENT**

In conformance with the CEQA-Plus requirements, a biological assessment will be prepared for the project. This assessment will focus on federal special-status species and will address compliance with the federal Endangered Species Act. The assessment will include record searches for known sensitive biological resources near the project site, a survey of the project site, and a technical report.

### **a. Literature Review**

Record searches and data gathering will be conducted by the project team prior to the field survey, including but not limited to a literature search of the California Natural Diversity Data Base for the project USGS quadrangle map and the eight surrounding quadrangles and a search of the California Native Plant Society, in order to generate a list of special-status plant and wildlife species and sensitive habitats with potential for occurrence within and near the project area.

### **b. Site Visit**

Field surveys will be conducted to identify sensitive habitat and determine the potential presence or absence of those special status species, including federal-listed species, which have the potential to occur within the project area. All plant and wildlife species observed during the surveys will be recorded. We will also evaluate habitats within the project site in order to determine suitability for the presence/absence of sensitive species identified during the literature review, including but not limited to pond turtle, San Joaquin kit fox, and least Bell's vireo. This evaluation will analyze habitat requirements of each sensitive plant and animal species in comparison to the existing habitat, elevation, and soils at the project site. Please note that this proposal does not include costs for formal protocol surveys for any sensitive species. Nor does it include costs for appropriately timed botanical surveys during the flowering period of sensitive plant species.

### **c. Biological Assessment Report**

A Biological Assessment (BA) will document the results of the literature search and field survey and discuss the existing biological conditions at the project site, including a generalized habitat map, species lists, and photo documentation. The BA will also discuss potential project impacts to special status species covered by the federal Endangered Species Act and the California Endangered Species Act. The BA will specify mitigation measures to protect biological resources during implementation of the project. SWCA assumes that a draft of this report and figures will be submitted for one round of comments/review.

## **3. AIR QUALITY ASSESSMENT**

The existing treatment plant is over 50 years old and has been upgraded several times since it was first built. Due to new requirements, a new upgrade is expected to include a high tech activated sludge or membrane bioreactor process, updated headworks facilities, biogas power generation capabilities, and computerized process controls.

PROPOSAL TO PROVIDE CEQA DOCUMENTATION SERVICES FOR THE CITY OF PASO ROBLES  
WWTP UPGRADE PROJECT – SAN LUIS OBISPO COUNTY, CALIFORNIA

---

Construction activities can produce various regulated air contaminants including ozone precursors and fine particulates (PM10 and PM 2.5). WWTPs can produce ozone precursors during operation. Both phases can produce methane and CO2, considered greenhouse gases by the US EPA and state of California. The California Air Resources Board operates a continuous monitoring station on Santa Fe Road in Paso Robles, where ozone and PM10 are measured. The SLO APCD also operates monitors at a number of other sites. As of the date of this writing, in 2008, 61 violations of the state 8-hour ozone standard have occurred, and 35 federal violations of this standard have been measured at various sites in the county. This data, coupled with previous year's violations (2006 and 2007), means the county will probably be re-designated non-attainment for the federal eight-hour ozone standard.

The county is currently considered in attainment for all federal air standards and thus no conformity analysis is required. Recent consultation with air district staff indicates it will likely be about 18 months for the federal non-attainment designation to be formally declared.

**a. Air Quality Conformity Analysis**

The air quality conformity analysis would include a description of the area's meteorology, existing air quality, and regulatory framework. The SLO APCD has a CEQA handbook that provides specific guidance for evaluating construction and operation emissions of various projects. SWCA would follow the format suggested by the air district in preparing the air quality section of the MND. The assessment will estimate criteria pollutant and greenhouse gas emissions both during the construction phase and during the operation phase. A comparison of operation emissions with air district significance thresholds and a discussion of air permit concerns will be presented. Generally speaking, a 5 MGD plant would emit about 500 lbs per day of Volatile Organic Compounds (VOCs), a primary ozone precursor, and thus would be a significant source if it were a new operation. Since the project is an upgrade to an existing plant that might actually capture and reduce VOCs, a net environmental benefit may occur. The analysis will discuss climate change and state regulatory action under AB 37, SB 95, and various executive orders issued by the governor. This section would include an estimate of greenhouse gases and their contribution to a cumulative impact. This section would include a discussion about general conformity with the state implementation plan. Mitigations based on SLO APCD thresholds for levels of soil movement and other activities that would trigger mitigation requirements will also be presented. Operational emissions are typically regulated by air district permits and thus SWCA would coordinate mitigation suggestions with this agency. SWCA assumes that a draft of the air conformity analysis report and figures will be submitted for one round of comments/review.

**4. CULTURAL RESOURCES ASSESSMENT**

As part of the CEQA process for the project, cultural resources will be evaluated in the project area. This evaluation will include a records search, a sacred lands search, pedestrian survey, and a technical report. The impact discussion will consider the potential for buried resources to be exposed during construction activities. SWCA assumes that with the assistance of State Revolving Fund (SRF), the project must comply with National Historic Preservation Act (NHPA) Section 106. Accordingly, cultural resources studies for this project will be performed according to the guidelines and recommended procedures as outlined by the State Historic Preservation Office (SHPO) in accordance with NHPA Section 106. All work required for this contract will be supervised by professionals that meet the standards established by the U.S. Secretary of the Interior for work in archaeology, history, and architectural history. The scope of work for cultural resources includes the following:

**a. Cultural Resources Records Search**

SWCA will conduct a California Historical Resources Information System (CHRIS) records search of the 52-acre project area at the Central Coastal Information Center (CCIC) at University of California, Santa Barbara. The CCIC houses cultural resources records and the primary purpose of the CHRIS records search is to identify any previously recorded cultural resources known to exist within or adjacent to the project area. In addition to the archaeological inventory records and reports, an examination will be made of

PROPOSAL TO PROVIDE CEQA DOCUMENTATION SERVICES FOR THE CITY OF PASO ROBLES  
WWTP UPGRADE PROJECT – SAN LUIS OBISPO COUNTY, CALIFORNIA

---

historic maps, the NRHP, the California Inventory of Historical Resources, and the listing of California Historical Landmarks. The records search will also reveal the nature and extent of any cultural resources work previously conducted within the project area. SWCA assumes that the CCIC will conduct this records search within a maximum of three hours and that this search will be conducted at standard rates; should rush rates or more time be required, a change order would be necessary.

**b. Prepare Area of Potential Effects Map**

Using design maps provided by City of Paso Robles, a draft Area of Potential Effect (APE) for cultural resources at the proposed project area will be established prior to the survey. The map will include all proposed construction and staging areas that may directly or indirectly affected by project activities. The map will be modified depending upon the findings of the field survey, and any changes will be reflected in a revised APE.

**c. Initial Native American Consultation (NAHC)**

SWCA will contact the NAHC for a review of their Sacred Lands File. The NAHC will determine if any NAHC-listed Native American sacred lands are located within or adjacent to the project area. In addition, the NAHC will provide a list of Native American contacts for the project that they believe should be contacted for additional information. SWCA will prepare and mail a letter to each of the NAHC-listed contacts, requesting that they contact us if they know of any Native American cultural resources within or immediately adjacent to the project area. Should additional Native American consultation be required, SWCA would request a change order to complete this additional work.

**d. Cultural Resources Field Survey**

Upon completion of the CHRIS records search, SWCA will conduct a Phase I intensive pedestrian survey of the entire project area. SWCA understands that the total project area consists of 52 acres. An SWCA archaeologist will conduct the survey utilizing pedestrian transects spaced at maximum intervals of 15 meters, covering all portions of the project area. For the purposes of this proposal and cost estimate, SWCA assumes that the cultural resources survey will be negative (i.e. no previously unrecorded cultural resources will be encountered and no previously recorded cultural resources will require updates). Any previously unrecorded cultural resources (archaeological and/or historic architectural) identified during the survey would require a change order for formal recordation. No testing or excavation will be conducted, nor will any artifacts, samples, or specimens be collected during the survey.

**e. Cultural Resources Technical Report**

Upon completion of the literature review, initial Native American consultation, and survey, SWCA will prepare a cultural resources technical report. This technical report will document the results of the literature review, Native American consultation, and field survey as well as provide management recommendations for resources within or near the project area. The report will meet the Secretary of Interior's Standards and Guidelines and will follow ARMR guidelines (*Archaeological Resource Management Reports: Recommended Contents and Format*). The report will include maps depicting the area surveyed for cultural resources. SWCA assumes that a draft of this report and figures will be submitted for one round of comments/review.

If the locations of sensitive archaeological sites or Native American cultural resources will be depicted or described in the report, it will be considered confidential; the report may not be distributed to the public. In order to protect these sensitive resources, the confidential technical report shall be made available only to qualified cultural resources personnel, the landowner, and project management personnel on a "need to know" basis.

## **SECTION E. REFERENCES**

SWCA is proud to provide the following two project references, both of which involved wastewater treatment plants and associated infrastructure. We encourage those reviewing the SWCA proposal to contact those listed for information on SWCA's capabilities and past record of performance. Additional references are also available upon request.

### **1. COUNTY SERVICE AREA 7A (OAK SHORES) WASTEWATER TREATMENT PLANT UPGRADE EIR**

**Client Name:** County of San Luis Obispo Public Works Department  
**Client Contact:** Mark Hutchinson  
**Phone Number:** 805-781-5458  
**Timeframe:** July 2007 to July 2008

Morro Group, prior to being acquired by SWCA, was retained by the County of San Luis Obispo Public Works Department to prepare an Environmental Impact Report for the County Service Area 7A Wastewater Treatment Plant Upgrade project. The County Service Area (CSA) 7A Wastewater Treatment Plant Upgrade Project consists of improvements to the existing wastewater collection, treatment, and disposal facilities serving the village of Oak Shores in San Luis Obispo County, California. Proposed improvements include upgrades to the wastewater treatment plant and aeration ponds, addition of sludge drying beds, construction of percolation basins, and improvements to the sewage collection system, interface, and associated infrastructure. These improvements would expand the capacity of the facility and improve the quality of the treated effluent. Major environmental issues of concern addressed in the EIR include: air quality, biological resources, cultural resources, geology, hazards, noise, and hydrology. The County of San Luis Obispo certified the Final EIR in July 2008.

### **2. COALINGA WASTEWATER TREATMENT PLANT PROGRAM EIR**

**Client Name:** City of Coalinga  
**Client Contact:** Bill Skinner, City Manager  
**Phone Number:** 559-935-1533  
**Timeframe:** July 2004 to June 2006 (FEIR certified)

Morro Group, prior to being acquired by SWCA, was retained by the City of Coalinga to prepare an EIR for a new wastewater treatment plant to be located on 477 acres east of the City of Coalinga at the intersection of Jayne Avenue and State Highway 33. This EIR covered the annexation of the property, the general plan amendment to designate the annexed property Public Facilities, and the preliminary development plans for the wastewater treatment plant facility, sewage collection trunk lines and the decommissioning of the existing treatment plant. Because facilities plans were at the preliminary design stage, the EIR was prepared as a Program EIR which identified the need for subsequent environmental review of several design features that were unresolved by publication of the Draft EIR. The Program EIR identified several significant environmental effects which could not be fully mitigated, including the removal of 468 acres from the Williamson Act program, conversion of prime farmland to a non-agricultural use, cumulative air quality impacts, impacts to blunt-nosed leopard lizard, and inconsistency with FAA Advisory Circular recommending a five-mile separation between the wastewater treatment plant and the Coalinga Airport Operations Area (AOA). The PEIR was certified in June 2006.

**SECTION F. PROPOSED CEQA DOCUMENTATION SCHEDULE**

We understand that time is of the essence and are willing to meet any schedule the City requests; our staff is available and ready to meet all deadlines set forth by the City. SWCA's project team will initiate work on the CEQA analysis immediately following authorization. A schedule for completing the CEQA Documentation and estimated dates for submittal of deliverables based on a contract award date of October 10, 2008 is given on the following Table 1.

SWCA understands that the absolute deadline is April 1, 2009 and will make every effort to complete tasks and prepare deliverables ahead of schedule if possible.

**TABLE 1. CEQA Documentation Preparation / Target Dates Schedule**

Task/Invoice Submittal	Tentative Completion Dates
Preparation and distribution of referral packages	October 20, 2008
Preparation of the Draft Biological Assessment (BA), Draft Clean Air Act Conformity Analysis (CA), and Draft Cultural Resources Technical Report (CRTR) including record searches, consultations, and field surveys	November 10, 2008
Submittal of the Draft BA, Draft CA, and Draft CRTR to the City for review and comments	November 24, 2008
Incorporate City's comments and prepare Final BA, Final CA, and Final CRTR	December 8, 2008
Submittal of the Final BA, Final CA, and Final CRTR to City for review and approval	December 22, 2008
Preparation of Draft Mitigated Negative Declaration (MND) with Draft Mitigation and Monitoring Plan (MMP)	January 19, 2009
Incorporate City's comments and prepare MND for public circulation	February 2, 2009
Circulation of Draft MND to State Clearinghouse and relevant agencies (30-day review period)	March 4, 2009
Review and respond to comments from agencies and prepare public notification requirements	March 18, 2009
Conduct public hearing and adopt MND and MMP	March 2009
File Notice of Determination	March 2009
Completion Date	April 1, 2009

## SECTION G. PROPOSED BUDGET

### 1. COST SUMMARY

The total cost for all fixed-fee, time-and-materials, and optional tasks is \$25,378.00, as shown in detail in Table 3, Cost Estimate, on page 15, and summarized in Table 2 below. Included in this cost summary are estimated labor hours and expenses by subtask. It is our understanding that the budget will be treated as a not-to-exceed limit of the subcontract agreement and that the amount of the budget cannot be exceeded without prior authorization by the City and Cornerstone.

**TABLE 2. Cost Estimate Summary**

Task	Estimated Cost
Task 1 – Mitigated Negative Declaration	\$10,005
Task 2 – Biological Assessment	\$6,125
Task 3 – Air Quality Assessment	\$3,965
Task 4 – Cultural Resources Assessment	\$5,493
<b>TOTAL ESTIMATED COST</b>	<b>\$25,588</b>

#### a. Document Production Costs

For the reproduction of medium-to-large-sized environmental documents (50 pages or greater), SWCA utilizes Mike's Copies and Graphics, located in San Luis Obispo. Our fixed-fee contracts estimate the cost of document reproduction and our time-and-materials contracts bill reproduction at actual cost. Day-to-day copies on SWCA copy machines are considered to be a normal part of business and are not charged to the contract.

#### b. SWCA Hourly Rates

SWCA's proposed hourly rates are shown in Table 3 below; these rates are valid through the 2008/2009 fiscal year. Please note that the proposed rates are negotiable.

TABLE 3. Cost Estimate

	Principal-in-Charge	Senior Planner	Senior Biologist	Biologist	Air Quality Specialist	Cultural Resources Program Director	Cultural Resources Project Manager	Cultural Resources Specialist	Cultural Resources Principal Investigator	GIS/RIS Specialist	Technical Editor	Administrative Assistant	SWCA - Labor Total	Reimbursables	TOTAL
	Hourly Rate	\$150	\$105	\$105	\$85	\$135	\$165	\$85	\$65	\$115	\$105	\$70	\$55		
<b>Task 1.0 Mitigated Negative Declaration</b>															
1.1	Field Inspection		8										\$840	\$35	\$875
1.2	Referrals and agency consultation		8										\$840		\$840
1.3	Initial Study/Mitigated Negative Declaration	2	24	8	12	1			3	4	4		\$6,330		\$6,330
1.4	Noticing requirements		4								4		\$700		\$700
1.5	Meetings (2), hearing (1)		12										\$1,260		\$1,260
	<b>Subtotal</b>	2	56	8	12	1			3	4	4	8	\$9,970	\$35	\$10,005
<b>Task 2.0 Biological Assessment</b>															
2.1	Record Search, Literature Review, and Field Work			10									\$850	\$35	\$885
2.2	Draft BA	1	2	24						8	4		\$3,520		\$3,520
2.3	Revision per comments from City			8									\$680		\$680
2.4	Final BA	1	2	8									\$1,040		\$1,040
	<b>Subtotal</b>	2	4	50						8	4		\$6,090	\$35	\$6,125
<b>Task 3.0 Air Quality Assessment</b>															
3.1	Field Inspection				3								\$405	\$35	\$440
3.2	Consultation with SLO APCD				2								\$270		\$270
3.3	Conformity Analysis				12								\$1,620		\$1,620
3.4	Revision per comments from City				8								\$1,080		\$1,080
3.5	Final Air Quality Section	1			3								\$555		\$555
	<b>Subtotal</b>	1			28								\$3,930	\$35	\$3,965
<b>Task 4.0 Cultural Resources Assessment</b>															
4.1	Cultural Resources Records Search					1		3		2		1	\$625	\$509	\$1,134
4.2	Initial Native American Consultation (NAHC)							3				1	\$250	\$33	\$283
4.3	Cultural Resources Field Survey							16		1			\$1,145	\$531	\$1,676
4.4	Cultural Resources Technical Report	1				1	12	2	4	2	3	1	\$2,400		\$2,400
	<b>Subtotal</b>	1				2	12	24	4	5	3	3	\$4,420	\$1,073	\$5,493
<b>TOTAL FIXED FEE BUDGET (Labor, Reimbursables)</b>															
		6	54	4	58	40	12	24	7	17	15	3	\$24,200	\$1,178	\$25,588



PROPOSAL TO PROVIDE CEQA DOCUMENTATION SERVICES FOR THE CITY OF PASO ROBLES  
WWTP UPGRADE PROJECT – SAN LUIS OBISPO COUNTY, CALIFORNIA

---

Back of Table 3

PROPOSAL TO PROVIDE CEQA DOCUMENTATION SERVICES FOR THE CITY OF PASO ROBLES  
 WWTP UPGRADE PROJECT – SAN LUIS OBISPO COUNTY, CALIFORNIA

**TABLE 4. SWCA Fee Schedule**

Labor Category	Billing Rate
<b>Project Management</b>	
Project Manager	\$105-\$165
<b>Environmental Services</b>	
Air Quality Specialist	\$125
Planning Specialist VII	\$115
Planning Specialist VI	\$105
Planning Specialist V	\$95
Planning Specialist IV	\$85
Planning Specialist III	\$75
Planning Specialist II	\$65
Planning Specialist I	\$55
<b>Biological Resources</b>	
Senior Biologist	\$150
Environmental Specialist VII	\$115
Environmental Specialist VI	\$105
Environmental Specialist V	\$95
Environmental Specialist IV	\$85
Environmental Specialist III	\$75
Environmental Specialist II	\$65
Environmental Specialist I	\$55
Environmental Technician II	\$45
<b>Cultural Resources</b>	
Cultural Resource Specialist X	\$150
Architectural Historian / Cultural Resource Specialist IX	\$135
Cultural Resource Specialist VII	\$115
Principal Investigator / Cultural Resource Specialist VI	\$105
Cultural Resource Specialist V	\$95
Cultural Resource Specialist IV	\$85
Cultural Resource Specialist III	\$75
Cultural Resource Specialist II	\$65
Cultural Resource Specialist I	\$55

PROPOSAL TO PROVIDE CEQA DOCUMENTATION SERVICES FOR THE CITY OF PASO ROBLES  
 WWTP UPGRADE PROJECT – SAN LUIS OBISPO COUNTY, CALIFORNIA

Labor Category	Billing Rate
<b>Paleontological Resources</b>	
Principal Investigator	\$135
Paleontology Specialist V	\$95
Paleontology Specialist IV	\$85
Paleontology Specialist III	\$75
Paleontology Specialist II	\$65
Paleontology Specialist I	\$55
<b>Support/Administrative</b>	
GIS/CAD Specialist VI	\$105
GIS Specialist III	\$75
Technical Editor IV	\$85
Administrative Assistant IV	\$65
Administrative Assistant II	\$55
<b>Other Direct Costs*</b>	
Lodging	at federal rate
Per Diem	\$39
Mileage	at federal rate
Materials & Supplies	at cost
Telephone	at cost
Rental Car	at cost
Copies (in-house), each	\$0.10
Color Copies 8 1/2 x 11, each	\$1.00
Color Copies 11 x 17, each	\$1.50
Total Station, per day	\$65
GPS Unit, handheld, per day	\$10
GPS Unit, Trimble (sub-meter), per day	\$45
Digital Camera, per day	\$15
Laptop computer, per day	\$20
Survey Equipment	\$10
Plotter, per square foot	\$5
* administrative fee added to other direct costs administrative fee added to sub-consultant costs Rates are subject to revision January 1 of each year	

**APPENDIX A. SAMPLE INSURANCE CERTIFICATE**

PROPOSAL TO PROVIDE CEQA DOCUMENTATION SERVICES FOR THE CITY OF PASO ROBLES  
WWTP UPGRADE PROJECT – SAN LUIS OBISPO COUNTY, CALIFORNIA

---

# ACORD™ CERTIFICATE OF LIABILITY INSURANCE

DATE (MM/DD/YYYY)  
01/31/08

**PRODUCER** 1-602-381-2800  
Wells Fargo Insurance Services of Arizona, Inc.  
4742 N. 24th Street, Suite 270  
Phoenix, AZ 85016-9998

**THIS CERTIFICATE IS ISSUED AS A MATTER OF INFORMATION ONLY AND CONFERS NO RIGHTS UPON THE CERTIFICATE HOLDER. THIS CERTIFICATE DOES NOT AMEND, EXTEND OR ALTER THE COVERAGE AFFORDED BY THE POLICIES BELOW.**

**INSURED**  
SWCA, Inc.  
dba: SWCA Environmental Consultants  
3033 N Central Ave., Suite 145  
Phoenix, AZ 85012

INSURERS AFFORDING COVERAGE	NAIC #
INSURER A: Greenwich Insurance Company	
INSURER B: XL Specialty Insurance Company	
INSURER C:	
INSURER D:	
INSURER E:	

## COVERAGES

THE POLICIES OF INSURANCE LISTED BELOW HAVE BEEN ISSUED TO THE INSURED NAMED ABOVE FOR THE POLICY PERIOD INDICATED. NOTWITHSTANDING ANY REQUIREMENT, TERM OR CONDITION OF ANY CONTRACT OR OTHER DOCUMENT WITH RESPECT TO WHICH THIS CERTIFICATE MAY BE ISSUED OR MAY PERTAIN, THE INSURANCE AFFORDED BY THE POLICIES DESCRIBED HEREIN IS SUBJECT TO ALL THE TERMS, EXCLUSIONS AND CONDITIONS OF SUCH POLICIES. AGGREGATE LIMITS SHOWN MAY HAVE BEEN REDUCED BY PAID CLAIMS.

INSR LTR	ADD'L INSRD	TYPE OF INSURANCE	POLICY NUMBER	POLICY EFFECTIVE DATE (MM/DD/YY)	POLICY EXPIRATION DATE (MM/DD/YY)	LIMITS	
A		<b>GENERAL LIABILITY</b> <input checked="" type="checkbox"/> COMMERCIAL GENERAL LIABILITY CLAIMS MADE <input checked="" type="checkbox"/> OCCUR  GEN'L AGGREGATE LIMIT APPLIES PER: <input type="checkbox"/> POLICY <input checked="" type="checkbox"/> PROJECT <input type="checkbox"/> LOC	GBC001910402	07/26/07	07/26/08	EACH OCCURRENCE	\$1,000,000
						DAMAGE TO RENTED PREMISES (Ea occurrence)	\$100,000
						MED EXP (Any one person)	\$5,000
						PERSONAL & ADV INJURY	\$1,000,000
						GENERAL AGGREGATE	\$2,000,000
						PRODUCTS - COMP/OP AGG	\$2,000,000
A		<b>AUTOMOBILE LIABILITY</b> <input checked="" type="checkbox"/> ANY AUTO <input type="checkbox"/> ALL OWNED AUTOS <input type="checkbox"/> SCHEDULED AUTOS <input checked="" type="checkbox"/> HIRED AUTOS <input checked="" type="checkbox"/> NON-OWNED AUTOS	AEC001910202	07/26/07	07/26/08	COMBINED SINGLE LIMIT (Ea accident)	\$1,000,000
						BODILY INJURY (Per person)	\$
						BODILY INJURY (Per accident)	\$
						PROPERTY DAMAGE (Per accident)	\$
		<b>GARAGE LIABILITY</b> <input type="checkbox"/> ANY AUTO				AUTO ONLY - EA ACCIDENT	\$
						OTHER THAN AUTO ONLY: EA ACC	\$
						AGG	\$
A		<b>EXCESS/UMBRELLA LIABILITY</b> <input checked="" type="checkbox"/> OCCUR <input type="checkbox"/> CLAIMS MADE  <input type="checkbox"/> DEDUCTIBLE <input checked="" type="checkbox"/> RETENTION \$10,000	UEC00191032	07/26/07	07/26/08	EACH OCCURRENCE	\$5,000,000
						AGGREGATE	\$5,000,000
							\$
							\$
							\$
B		<b>WORKERS COMPENSATION AND EMPLOYERS' LIABILITY</b> ANY PROPRIETOR/PARTNER/EXECUTIVE OFFICER/MEMBER EXCLUDED? If yes, describe under SPECIAL PROVISIONS below	WEC001910602	07/26/07	07/26/08	<input checked="" type="checkbox"/> WC STATUTORY LIMITS <input type="checkbox"/> OTHER	
						E.L. EACH ACCIDENT	\$1,000,000
						E.L. DISEASE - EA EMPLOYEE	\$1,000,000
						E.L. DISEASE - POLICY LIMIT	\$1,000,000
A		<b>OTHER</b> Environmental Liability	PEC001910502	07/26/07	07/26/08	Each Claim & Agg	5,000,000
A		(Professional)	.	.	.	Each Claim Deduct.	100,000
A		See Supplemental	.	.	.		

**DESCRIPTION OF OPERATIONS / LOCATIONS / VEHICLES / EXCLUSIONS ADDED BY ENDORSEMENT / SPECIAL PROVISIONS**  
 Special endorsements apply to the policies shown on this certificate and are described on the attached Supplement. The coverage provided by the endorsements applies only where the Insured has agreed to do so by written contract/agrmnt.

## CERTIFICATE HOLDER

SWCA Environmental Consultants  
3033 N Central Ave, Suite #145  
Phoenix, AZ 85012

## CANCELLATION 10 Days Notice for Non Payment of Premium

SHOULD ANY OF THE ABOVE DESCRIBED POLICIES BE CANCELLED BEFORE THE EXPIRATION DATE THEREOF, THE ISSUING INSURER WILL ENDEAVOR TO MAIL 30 DAYS WRITTEN NOTICE TO THE CERTIFICATE HOLDER NAMED TO THE LEFT, BUT FAILURE TO DO SO SHALL IMPOSE NO OBLIGATION OR LIABILITY OF ANY KIND UPON THE INSURER, ITS AGENTS OR REPRESENTATIVES.

AUTHORIZED REPRESENTATIVE

*Edna C. Danahy*

## **IMPORTANT**

If the certificate holder is an ADDITIONAL INSURED, the policy(ies) must be endorsed. A statement on this certificate does not confer rights to the certificate holder in lieu of such endorsement(s).

If SUBROGATION IS WAIVED, subject to the terms and conditions of the policy, certain policies may require an endorsement. A statement on this certificate does not confer rights to the certificate holder in lieu of such endorsement(s).

## **DISCLAIMER**

The Certificate of Insurance on the reverse side of this form does not constitute a contract between the issuing insurer(s), authorized representative or producer, and the certificate holder, nor does it affirmatively or negatively amend, extend or alter the coverage afforded by the policies listed thereon.

**APPENDIX B. PROJECT TEAM RESUMES**



PROPOSAL TO PROVIDE CEQA DOCUMENTATION SERVICES FOR THE CITY OF PASO ROBLES  
WWTP UPGRADE PROJECT – SAN LUIS OBISPO COUNTY, CALIFORNIA

---

### **Education / Training**

- B.A., Environmental Psychology, Stanford University, 1971
- CLE Int'l 13th Annual California Wetlands Conference, January 2007

### **Registration / Certification**

- Director at Large California Association of Environmental Professionals

### **Expertise**

- Principal in Charge
- Project Manager
- Quality Assurance, Quality Control
- Liaison between Public Agencies and Private Clients
- Permitting Assistance
- Public Testimony
- Prepares Environmental, Market Study, and Planning Documents
- Socio-economist

### **Selected Projects**

- Growth Management Ordinance Master EIR; San Luis Obispo County
- Bob Jones Pathway NEPA and CEQA Studies PS-891; San Luis Obispo County
- Coalinga General Plan Update Master EIR; City of Coalinga
- Waterway Management Plan for San Luis Obispo Creek/Zone 9 Master Plan Programmatic EIS/EIR, Phases I and II of Program; San Luis Obispo County

Mrs. Reents has been a project manager and major contributor to more than 500 Environmental Impact Reports (EIRs) since 1978. She has been involved in the preparation of environmental, market study, and planning documents for more than 32 years. Projects have involved oil and gas facilities, fiber optic cable projects, wineries, large and small housing projects, flood drainage projects, landfills, schools, quarry operations, agricultural projects, golf courses, hotels, and commercial developments.

Mrs. Reents has extensive experience as a project manager for multi-disciplinary environmental studies, environmental impact analysis for land use planning and energy projects; land use planning studies, socioeconomic and market feasibility studies. Her work effort has been focused primarily in central California, but has additional energy-related work in Colorado, Utah, North Dakota, Wyoming, Texas, and Louisiana.

Mrs. Reents was Coastal Planner and Planner in charge of preparation of the City of Pismo Beach Local Coastal Plan Land Use Plan and the major revisions to all nine elements of the City's General Plan. She also acted as consultant to the City of Morro Bay for preparation of the City's Local Coastal Plan, Land Use Plan; and has upgraded the planning data for various documents in San Luis Obispo County, including the Growth Management Ordinance, Waterway management plans for San Luis Obispo Creek and Arroyo Grande Creek and has prepared a variety of environmental documents for public works projects including major highway segments, bridges, waste water treatment facilities and fiber optic cable projects. In 1979, she acted as interim Environmental Coordinator for the County of San Luis Obispo.

Currently she is Project Director for several on-call contracts for various departments within the County of San Luis Obispo, the City of San Luis Obispo, and the City of Coalinga. These on-call contracts require a variety of services from research, staff reporting, client liaison, preparation of notices, environmental documents, and monitoring.

### **Education / Training**

- B.S., Natural Resource Management, California Polytechnic State University, San Luis Obispo, 2001

### **Expertise**

- California Environmental Quality Act
- City and Regional Planning
- Local government assistance
- Project management
- Construction monitoring
- Revegetation monitoring programs

### **Relevant Projects**

- Oak Shores Wastewater Treatment Plant Upgrade Environmental Impact Report; San Luis Obispo County, California
- Laetitia Agricultural Cluster Environmental Impact Report; San Luis Obispo County, California
- Fiscalini Ranch Environmental Impact Report; San Luis Obispo County, California
- Santa Maria Levee Repair Environmental Determination; Santa Barbara County, California
- County of San Luis Obispo Environmental Division Overflow; San Luis Obispo County
- San Luis Bay Estates Phase 5 Construction and Revegetation; San Luis Obispo, California

Ms. Scott has more than eight years experience in land use and environmental planning involving the preparation, coordination, and processing of discretionary land use permit, subdivision, and general plan amendment applications. She specializes in implementing lead agency responsibilities under the California Environmental Quality Act (CEQA), managing project teams, and writing environmental documents. Ms. Scott has knowledge of policies and procedures of local government planning operations and federal and state laws related to planning, zoning, and environmental policy. Ms. Scott has gained experience in working with agencies, applicants, community advisory groups, problem solving, and conflict resolution.

Ms. Scott manages small-, medium-, and large-scale projects. Specifically, she manages open-ended contracts with the County of San Luis Obispo Department of Planning and Building and County of San Luis Obispo Department of General Services. She is responsible for over 200 environmental determinations and environmental monitoring programs for a variety of project types prepared under these contracts and throughout the County of San Luis Obispo, City of San Luis Obispo, City of Paso Robles, and City of Pismo Beach. In addition, Ms. Scott has managed the preparation of environmental impact reports and environmental documents required by Caltrans, including Preliminary Environmental Assessment Reports and Environmental Scoping Reports. Ms. Scott ensures that each project is kept on track and within budget while coordinating each task and phase of the project. She works closely with the client and sub-consultants throughout the length of the project.

Ms. Scott has prepared several types of environmental documents including Environmental Impact Reports (EIRs), negative declarations, expanded initial studies, preliminary environmental analysis reports, CEQA findings and field monitoring reports. Ms. Scott has extensive experience evaluating a variety of resources including biological, visual, drainage and soils, agricultural, recreational, cultural, noise, air quality, and hydrological.

### **Education / Training**

- B.S., Soil Science, minor in Watershed Management, California Polytechnic State University, San Luis Obispo, 1996
- A.A., Environmental Studies, emphasis in Botany, Santa Barbara City College, California, 1992
- Wetland Delineation Training Course, University of California, Berkeley Extension, 1998
- Hazardous Material Identification using HazCat, University of California, Santa Barbara Extension, 1992
- Master Water Auditor Training Course, California Polytechnic State University, San Luis Obispo, 1988

### **Registration / Certification**

- Certified 24-Hour Hazardous Waste Operations and Emergency Response Training, 1999

### **Expertise**

- Riparian / watershed quality analysis
- Vegetation surveys
- Wetland delineations
- Habitat assessment
- Environmental monitoring

### **Relevant Projects**

- Native Grassland Habitat Assessment for the Losson Property; Santa Ynez, Santa Barbara County, California
- Cholame Valley Road Wetland Delineation; San Luis Obispo County, California
- Poly Canyon Village Biological Monitoring; San Luis Obispo County, California

Mr. Sloan has more than 15 years of experience involving botanical and horticultural concerns, including site analysis, revegetation, plant selection, and exotic species removal, and over ten years of experience in riparian and watershed quality analysis, including vegetation surveys, wetland delineations, sedimentation and erosion monitoring, habitat assessment, regulatory issues, and environmental monitoring. He specializes in riparian and wetland habitats, botany/plant taxonomy, and site mitigation/restoration, with extensive experience performing wetland delineations, special status plant and animal surveys, biological site assessments, mitigation plan preparation and environmental and construction monitoring. Mr. Sloan has expertise in botany, soil science, watershed management, wetland regulations, and California plant communities and associated wildlife habitats.

Mr. Sloan has performed over 40 wetland delineations for public and private projects in San Luis Obispo, Santa Cruz, and Santa Barbara Counties, using U.S. Army Corps of Engineers (USACE) and California Coastal Commission (CCC) methodologies. Delineations have ranged from routine assessments to forensic determinations on sites disturbed by grading or fill activities. Mr. Sloan has worked closely with USACE and CCC staff to ensure that delineated boundaries are accurate and defensible. He has also developed and implemented mitigation and monitoring plans for several protected plant species, including Morro manzanita, Pismo clarkia, Congdon's tarplant, black-flowered figwort, Salinas Valley goldfields, and coast live oak trees in accordance with California Department of Fish and Game, U.S. Fish & Wildlife Service, and County requirements.

Mr. Sloan regularly prepares biological evaluations including riparian and wetland inventories, rare plant surveys and habitat assessments for numerous projects in the Central Coast area, using agency-approved methodologies. Mr. Sloan has held a federal permit to conduct surveys for the federally endangered Morro shoulder band snail since 1998, and has performed more than 100 surveys and habitat assessments for the species. Mr. Sloan also regularly writes environmental documents for various agencies and clients in a multitude of formats.

### **Education / Training**

- B.S., Environmental Science, Natural Resource Management, California State University Channel Islands, Camarillo, 2005
- California Red-Legged Frog Workshop, Elkhorn Slough National Estuarine Research Reserve, 2008
- Erosion Control for Contractors, Engineers, Developers & Planners, Upper Salinas Las Tablas Resource Conservation District, 2007
- Wetland Training Institute Basic Wetland Delineation Training, 2007
- Hazardous Waste Operations and Emergency Response, Envirocon, 2006
- Conifer and Oak Identification Workshop, Cheadle Center for Biodiversity and Ecological Restoration, April 15, 2006
- Jepson Manual Workshop, Santa Barbara Botanical Garden, 2004–2005

### **Registration / Certification**

- California Department of Fish and Game Scientific Collecting Permit SC-008300

### **Expertise**

- Wetland, riparian, and dune restoration
- Special status plant and animal surveys
- Jurisdictional delineation reports and maps

### **Relevant Projects**

- T.O. 42 - Olancha Cartago 4-Lane Project Bio Studies; Inyo County, California
- T.O. 44 Mendota 180 Biology Monitoring; Fresno County, California

Mr. Holland has more than four years experience as a biologist in California. During this time, Mr. Holland has performed a variety of biological and environmental tasks including, but not limited to: wetland, riparian and dune restoration, native seed collection, special-status plant and animal surveys, mapping plant communities, biological constraints analyses, nesting bird surveys in accordance with the Migratory Bird Treaty Act (MBTA), protected tree surveys, and the implementation of mitigation monitoring plans. In addition, Mr. Holland also has extensive experience monitoring construction activities and work crews for large and small-scale projects.

Mr. Holland has extensive experience conducting surveys for various special-status plants found throughout California. He has also participated in mitigation efforts for special-status plants including: the Santa Susana tarplant, slender mariposa lily, Ventura marsh milk-vetch, and the Coachella milk-vetch. Other species-specific experience includes protocol-level surveys for burrowing owls in Ventura, Los Angeles, and Riverside Counties, as well as surveys and relocation programs for silvery legless lizards in Ventura County.

As a biologist Mr. Holland has participated and monitored the removal of invasive/nonnative plants in a variety of different habitats for streambed alteration agreements and for mitigation monitoring plan requirements. He has also assisted in the preparation of numerous jurisdictional delineation reports and maps for the U.S. Army Corps of Engineers (USACE) and California Department of Fish and Game (CDFG).

Mr. Holland has been involved in large and small projects as a compliance monitor. He has acted as the lead monitor on the remediation of a 90-acre oil field waste site in Ventura County. Duties include enforcing CC&R's placed on the project, protection of Ventura marsh milk-vetch critical habitat, establishing buffers for nesting and wintering birds, coordination with regulatory agencies, construction worker education on sensitive resources found on-site, and dust control monitoring.

Mr. Holland is also proficient in the use of the Trimble GeoXT Global Positioning System (GPS) and regularly utilizes GPS to delineate wetlands and waters of the U.S.

### **Education**

- M.S., Historical Archaeology, California State University, San Jose, 2002
- B.A., Anthropology, California State University, San Jose, 1998

### **Registration / Certification**

- Registered Professional Archaeologist (National), 2002
- Certified for search, recovery, and identification of human remains; University of Nevada, Reno, 2000
- Certified Open Water Diver
- HazMat 40 hour Training

### **Expertise**

- Project management
- Cultural resources management
- CEQA, Section 106 compliance
- NEPA compliance
- Human osteology
- Pathological analysis
- Forensic criminal and anthropological analysis
- Regulatory compliance and permitting in 21 states

### **Selected Projects**

- Program Manager, County of Sacramento, Department of Environmental Review and Assessment On-call Contract; CA
- Project Manager, Qwest Communications Cultural Resources On-call; Multiple Counties in California
- Assistant Project Manager, Easton Environmental Impact Report (EIR); Sacramento County, California
- Project Manager, Cosumnes Power Plant Project Environmental Monitoring; Sacramento County, California

Ms. Arrington is the cultural resources program director for SWCA's Sacramento, California, office. She has more than 13 years of experience in cultural resources management (CRM). Her professional experience encompasses a wide range of activities in the field, laboratory, and office, dealing with precontact, protohistoric, and historic resources. Her field experience includes an extensive background in the management of cultural resources compliance for large-scale construction projects, underwater archaeology, human osteology, and paleopathological analysis. She is experienced with the regulatory framework in 21 states and has managed 1,400 miles of linear construction in California alone.

Ms. Arrington has extensive experience in multi-disciplinary team management in the environmental profession. Expertise in project performance and compliance with federal, state, and local regulations; implementation of environmental mitigation monitoring plans for complex construction projects; preparation of reports; and direction of cultural resources surveys, excavation, and coordination with Native American groups.

Ms. Arrington's CRM office experience includes permitting in 21 states; writing, layout, and formatting of National Environmental Policy Act and California Environmental Quality Act-level P/A and site reports; computer-aided mapping and graphics production; coordination of maps for records searches; records searches at California Historical Resources Information System (CHRIS) Information Centers; and communication with the Native American Heritage Commission.

As the Cosumnes Power Plant Project Manager, Ms. Arrington organizes and oversees all aspects of biological, cultural, and paleontological monitoring and planning during all phases of construction and work on the associated natural gas pipeline. This highly visible project has specific conditions for approvals, sensitive resource issues, and strict procedural requirements. Management involves interfacing with governmental, private enterprise, and Native American community representatives to balance conflicting priorities and ensure timely and efficient completion of all tasks. Furthermore, Ms. Arrington concurrently directed 52 linear construction projects in seven states simultaneously for Quest Communications Inc., managing all crews, monitors, Native American participants, and participating government agency personnel, and ensuring compliance with all governmental regulatory agencies.

### Education

- Ph.D., Anthropology, University of Illinois at Urbana-Champaign, 1995
- A.M., Anthropology, University of Illinois at Urbana-Champaign, 1990
- B.A., with distinction, Anthropology/Museology, University of Nevada-Reno, 1985

### Registration / Certification

- Registered Professional Archaeologist (National), 2002
- Certified Archaeologist (CA), Orange County, 2003
- Cultural Resources Specialist (CA), California Energy Commission, 2003

### Expertise

- CEQA, Section 106 compliance
- Cultural resources management
- EIR/EIS preparation
- Soil profiles and soil chemistry
- Stable isotope analysis: prehistoric diets and environmental reconstruction
- Geophysical techniques

### Selected Projects

- Cultural Resources Specialist, Cosumnes Power Plant, Sacramento Municipal Utility District, Sacramento County, California
- Principal Investigator, Qwest Network Construction Project, California (statewide covering 1,431 linear miles)
- Principal Investigator, Travertine - La Quinta Development; Riverside County, California
- Principal Investigator, Camp Pendleton Archaeological Evaluation and Eligibility Investigation of Site CA-SDI-13,665 for the U.S. Navy-Southwest Division; San Diego County, California
- Principal Investigator, Data Recovery of Site CA-LAN-254, Dayton Canyon Development; Los Angeles County, California
- Principal Investigator, Easton Project EIR; Sacramento County, California

Dr. Sikes is the Principal Investigator for the Cultural Resources Program at SWCA's California offices. She is an archaeologist with over 20 years of experience in a wide range of world areas and research settings. Dr. Sikes is certified by the Register of Professional Archaeologists and the County of Orange (California), is certified as a Cultural Resources Specialist (CRS) by the California Energy Commission, and is permitted by the State Antiquities Sections in Nevada and Utah and the Bureau of Land Management (BLM) in four western states (California, Oregon, Utah, and Washington). Dr. Sikes has attended workshops on federal (NHPA, NEPA) and state (CEQA, S.B. 18) laws, as well as on archaeological prospection (remote sensing). She holds Research Associate status with the National Museum of Natural History, Smithsonian Institution, with which she had a six-year association as a visiting scientist after receiving her Ph.D.

Dr. Sikes has been a principal investigator, senior scientist, and project manager for over 15 years. She has participated in all aspects of cultural resource management projects in northern and southern California, Nevada, Utah and Wyoming, and in historic preservation projects in Nevada. Her projects have included regulatory compliance, EIR preparation, and mitigation of prehistoric, historic, and natural resources for large-scale construction and development projects. Her cultural resources management experience encompasses a wide range of activities in the field, laboratory, and office, dealing with prehistoric and historic resources for private or state and federal regulatory agencies.

As a Principal Investigator, Dr. Sikes guides SWCA's scientific efforts, develops treatment plans and research designs under CEQA and Section 106 guidelines, conducts significance evaluations, and provides expertise and overall quality control on complex cultural resources projects, such as large excavations. Depending on the project, Dr. Sikes also acts as an environmental specialist or project manager. Other responsibilities at SWCA include agency, client and Native American consultation, preparation of proposals and budgets, overseeing file searches, surveys, site testing, data recovery and lab analysis, producing and editing technical reports, and producing EIR sections.

Further, Dr. Sikes provides technical expertise as an environmental specialist in the formation and description of soil profiles (geomorphology/formation processes) and chemistry of soils within archaeological sites; interpretation of stable isotope studies on prehistoric diets, soils/paleosols, and carbonates; paleoenvironmental reconstruction of material from soil or sediment cores; and guidance in the choice of geophysical techniques on a project-specific basis. She has applied her expertise to the study of numerous archaeological sites ranging in age from the late Holocene in the western United States to the early Pleistocene in East Africa, including Olduvai Gorge.

### **Education**

- M.A., Anthropology, New Mexico State University, 2005
- B.S., Anthropology, California Polytechnic State University, Pomona, 2001

### **Registration / Certification**

- Registered Professional Archaeologist (National), 2007

### **Expertise**

- Project management
- Cultural resources management
- NEPA compliance
- Ceramic analysis
- Lithic analysis
- Geographic Information Systems
- Regulatory compliance and permitting in three states

### **Selected Projects**

- Project Manager, County of Sacramento, Department of Environmental Review and Assessment; California
- Field Director, Laguna Madre Seismic Survey of 240 square miles; Cameron County, Texas
- Assistant Project Manager, 10,500 Acre McGregor Range Survey on Fort Bliss Military Reservation; multiple counties; New Mexico
- Assistant Project Manager, 11,000 Acre Survey on Fort Bliss Military Reservation; multiple counties, New Mexico and Texas
- Assistant Director, Coordination between the National Park Service and Chiricahua Native American groups.

Ms. Martinez is the cultural resources project manager for SWCA's Sacramento office. She has more than six years of professional experience. Her professional experience encompasses a wide range of activities in the field, laboratory, and office, dealing with precontact, protohistoric, and historic resources. Her field experience includes an extensive background in the management of cultural resources compliance for large-scale seismic projects and project on military reservations. She is experienced with the regulatory framework in three states.

Ms. Martinez has extensive experience in team management in the environmental profession. Expertise in project performance and compliance with federal, state, and local regulations; preparation of reports; and direction of cultural resources surveys, excavation, and coordination with Native American groups.

In the field, Ms. Martinez has led crews of up to 15 members, surveyed more than 20,000 acres, recorded more than 200 archaeological sites, both historic and prehistoric, and excavated a large pueblo in New Mexico. In the laboratory, she has organized crews to analyze artifacts, soils, flotation samples, carbon samples, dendrochronology samples, chipped stone, ground stone, ceramics and more.

Ms. Martinez's CRM office experience includes permitting in three states; writing, layout, and formatting of National Environmental Policy Act, site forms, and site reports; computer-aided mapping (expertise in ArcMap 9.2) and graphics production; and communication with multiple Native American groups, including the Bureau of Indian Affairs and the Native American Heritage Council.

As SWCA's Project Manager, Ms. Martinez organizes and oversees all aspects of cultural resources investigations. Management involves interfacing with governments, private enterprise, and Native American community representatives to balance conflicting priorities and ensure timely and efficient completion of all tasks.



### Education

- B.A., Anthropology with a focus in Archaeology with a minor in studio art University of Denver, Denver, Colorado, 2005
- 10 week intensive field training, Hawaiian Archaeological Research Project, Waikoloa uplands, University of Hawaii, Hawaii 2006
- Training with high density laser scanners

### Expertise

- Archaeological research, field and laboratory methods, and data interpretation
- Total Station, Tripod Mounted High Density Laser Scanners, Trimble Mapping Computers, Data Processing Techniques, Ground Penetrating Radar Map Reading in locating Archaeological Sites

### Selected Projects

- Archaeology Crew Chief, Sunrise Power Link Project, San Diego County, California
- Archaeological Technician, Wolf Springs Ranch Data Recovery Project Area, Custer and Huerfano Counties, Colorado
- Archaeology Assistant Crew Chief, Absaroka 3-D Geophysical Exploration Project Area, Lincoln County, Wyoming
- Archaeology Assistant Crew Chief, Columbine Springs 3-D Geophysical Exploration Project Area, Garfield and Rio Blanco Counties, Colorado and Uintah County, Utah
- Archaeology Assistant Crew Chief, Powder River Basin POD Project, Johnson County, Wyoming

Mr. Hanes is the archaeological field director in SWCA's Sacramento office and has nearly three years experience in archaeological fieldwork. His field experience includes seismic and block survey, excavation of archaeological sites, digital site mapping, field team management, and pipeline construction monitoring. In the lab, he has performed cataloging and analysis of artifacts recovered from excavations of archaeological sites. He also assisted in the creation of a new and more efficient system for cataloging and analyzing artifacts. Mr. Hanes has helped write and has co-authored final reports for completed projects.

As an Archaeology Crew Chief, Mr. Hanes recently completed multiple pedestrian surveys in San Diego County, California, for the Sunrise Power Link project. This project involves cultural resources survey of 27 proposed transmission line corridor alignments and numerous substations.

Prior to joining our Sacramento, California, office in June 2005, Mr. Hanes worked for SWCA's Denver, Colorado office. While in Denver, he worked on numerous projects within Colorado, Wyoming, and Utah.

### **Education / Training**

- B. A., Geography, emphasis in Geographic Information Systems and Remote Sensing, University of California at Santa Barbara, 1995

### **Expertise**

- GIS Project Management / Development
- Satellite image processing
- Topographic analysis
- Hydrologic modeling
- GPS data integration
- Dynamic segmentation – Right of Way Analysis
- Geologic hazard modeling
- Fire incident response and fuel mapping / modeling

### **Relevant Projects**

- University of California at Santa Barbara LRDP EIR GIS
- Topographic and Cultural Landscape Mapping & Aerial Photography at Hearst State Historical Monument
- Cambria Community Services District: Water Master Plan GIS
- Monterey County General Plan Geologic GIS Database and GIS Web Server
- Cambria Fire Dept. Fuel modeling; Emergency Response Mapping System
- City of Avalon Catalina Island Master Plan GIS/Coastal Commission report
- Central Coast Comprehensive Wetlands GIS Project – National Estuaries Program
- USN MCAGCC 29 Palms Range 500 Desert Tortoise Survey
- DOW AgroSciences Elanco Research Station GIS implementation
- Gulfstream Natural Gas System Project

Seth Sutherland is a GIS and Remote Sensing Specialist in the SWCA San Luis Obispo office serving biological resource and planning projects. He has over 15 years of experience in GIS applications and spatial analysis supporting consultants, utilities, cities, counties, and state agencies. Mr. Sutherland has managed GIS projects for planning, resource management, and web information services from California to Florida, and Sakhalin Island, Russia, to Bay of Guayaquil, Ecuador. His skills provide valuable support for assessment of development impacts, and spatial analysis for various environmental documents. He is responsible for the translation of field data, analysis of geographic information, and data collection using differential GPS. Experience in environmental sciences, cultural studies, geotechnical sciences, civil engineering, planning, and landscape architecture give Mr. Sutherland a broad background in the maintenance and analysis of the geospatial data that he supports and maintains.

A one time ESRI authorized business partner/developer, Mr. Sutherland has integrated GIS and database technologies into highly customized windows based applications to extend the power of geospatial information into facilities management and accounting. He has worked closely with a large variety of disciplines consolidating environmental and infrastructure data for use in GIS and cartographic applications. He has directed large scale field surveys covering hundreds of miles of Right of Way studies, and developed automated mapping and reporting utilities to generate large volume graphic and tabular databases. Mr. Sutherland has been responsible for and has vast experience with the creation of FGDC compliant geographic information systems.

Mr. Sutherland's experience in spatial analysis offers clients a resource to go beyond the use of existing data. Using cell based analysis, and reclassification techniques to derive new information from common datasets, Mr. Sutherland takes great pride in providing highly resolved, accurate utilization of geographic data and GIS application software to create premier quality GIS, remote sensing, and cartographic solutions for the clients that he serves. His many years as a GIS professional ensure that project goals will be met in a timely manner, the language of geography will be well communicated, and the resulting geographic products will be detailed and well documented.

### **Education / Training**

- Coursework, Focus on Liberal Arts and Fire Science, Los Angeles Harbor College, 2003
- CEQA Basics Workshop Series, Association of Environmental Professionals (AEP); Santa Barbara, California, 2006

### **Expertise**

- Environmental planning
- Environmental document coordination, preparation, and compilation
- Proposal and SOQ preparation and coordination
- Project management assistance

### **Relevant Projects**

- Chowchilla Waste Water Treatment Plant Environmental Impact Report; Madera County, California
- Oak Shores Wastewater Treatment Plant Upgrade Environmental Impact Report; San Luis Obispo County, California
- T.O. 28 - SR 108 East Sonora Bypass, Stage 2; Tuolumne County, California
- Task Order 22 - SR 198/12th Avenue Interchange Project; San Luis Obispo County, California
- Cold Canyon Landfill Expansion EIR; San Luis Obispo County, California

Ms. Jones has four years of professional experience in environmental planning with an emphasis on environmental document coordination and preparation. She has been involved in the facilitation of public scoping meetings and assisting with the preparation of environmental documents. She has also gained valuable experience in working with agencies, applicants, problem solving, and conflict resolution.

Ms. Jones has been involved in all aspects of public scoping meetings, including preparing PowerPoint presentations, meeting attendance sheets, and informational handouts. She has also attended meetings and assisted in the presentations, as well as recorded public comments for future project reference.

As Assistant Planner, Ms. Jones is involved in document quality control, consistency, and compilation of more than fifty environmental reports, including Environmental Impact Reports (EIRs), negative declarations, and a variety of biological studies. She assists project managers by scheduling meetings, organizing projects and schedules, assisting in the delegation of team responsibilities, preparing public notices and adhering to the requirements pertaining to these notices, and assisting in the management of and correspondence with subconsultants.

Ms. Jones is involved in generating mapping and graphics materials for a variety of planning staff reports, presentations, environmental documents, and reports.

**APPENDIX C. REPRESENTATIVE EXPERIENCE**

PROPOSAL TO PROVIDE CEQA DOCUMENTATION SERVICES FOR THE CITY OF PASO ROBLES  
WWTP UPGRADE PROJECT – SAN LUIS OBISPO COUNTY, CALIFORNIA

---

## **SWCA RELATED EXPERIENCE**

SWCA has been performing environmental work in San Luis Obispo County since 1984, which has helped contribute to our large cumulative body of knowledge for this unique area of San Luis Obispo County. Several examples of recent Constraints Analyses and EIRs prepared by SWCA are listed in detail below.

### **Morro Bay to Cayucos Connector Path Environmental Constraints Analysis**

SWCA was retained by the County of San Luis Obispo, General Services Department to prepare an Environmental Constraints Analysis for the proposed Morro Bay to Cayucos Bikeway/Pedestrian Connector Path. The objective of the project is to complete an important segment in the non-motorized transportation network along Highway 1. The project would be a dedicated Class I bicycle path and pedestrian corridor, completely separated from traffic from the City of Morro Bay to the southern end of the community of Cayucos. The project would provide a scenic and safe bicycle/pedestrian route and continuous off-highway connectivity for a distance of approximately 2.25 miles. Issues considered in the Analysis include Circulation and Safety, Visual Resources, Biological Resources, Cultural Resources, Hazardous Materials, and Drainage Erosion and Sedimentation.

### **Shandon Study Area Environmental Constraints Analysis**

SWCA was retained by the County of San Luis Obispo, Department of Planning and Building to prepare an Environmental Constraints Analysis for the Shandon Study Area Project. The purpose of the Environmental Constraint Analysis is to provide the County of San Luis Obispo environmental resource information to assist with planning and design within an approximate 2,000-acre study area. Upon its completion, the document will be used by the County as a tool for planning purposes and will preliminary serve as the basis for future decisions regarding the amount and type of development expected to occur in the project study area over the next 20 years.

### **City of Pismo Beach Wastewater Treatment Facilities Upgrade EIR**

This certified Final EIR addresses the capacity and technological wastewater treatment upgrades necessary to bring the City's facilities into compliance with State Waste Discharge Requirements. The project is located within the Coastal Zone, and potential concerns addressed in the document included Geologic Hazards, Drainage, Biological Resources, Cultural Resources, Traffic and Circulation, Air Quality, Noise, Aesthetic Resources, and Growth Inducing Impacts. This document fulfilled the CEQA plus requirements imposed on the City as a result of their request for a State Revolving Fund Loan from the State Water Resources Control Board Division of Clean Water Programs. The EIR covered six priority-one projects associated with the facilities upgrade of the existing City of Pismo Beach Waste Water Treatment Facility. These upgrades included improvements to the treatment facility consisting of construction of two oxidation ditches, two new 65-foot secondary clarifiers, a new biosolids pump station, a new headworks, a new standby generator to replace the two existing smaller generators, and a new operations center/lab. An existing 12-inch force main and a section of the 16-inch outfall were relocated and sections of other existing forcemains and pressure sewers leading to existing headworks were abandoned as part of the proposed project. The EIR evaluated all of these upgrade components. In addition, Addie Street Lift Station, Pismo Oaks Lift Station, the Schell Beach manhole rehabilitation project, the Pismo Heights I/I reduction project and the Park/Cypress Interceptor was included in the project. The upgrades were extensive and comprised improvements throughout the entire city limits, and would allow for increased population consistent with the City's recent general plan update. The EIR identified significant unavoidable impacts resulting from the existing treatment facility's location in a 100-year flood plain. Considerable mitigation was identified in the EIR; however, this impact could not be reduced to insignificance. Mitigation consisted of improvements to the stream flow characteristics by maintaining vegetation in the flood channel, design components to partially mitigate the effects of flooding (flood pumps, building design mitigation and flood walls), implementation of permanent solutions that would adequately protect the transport and treatment facilities from inundation and washout from a 100-year frequency flood, and

**PROPOSAL TO PROVIDE CEQA DOCUMENTATION SERVICES FOR THE CITY OF PASO ROBLES  
WWTP UPGRADE PROJECT – SAN LUIS OBISPO COUNTY, CALIFORNIA**

---

consideration of removal of the Highway 101 northbound off-ramp bridge at Pismo Street as part of Caltrans future planning. Overriding considerations were prepared for this Class 1 impact. The remaining impacts identified as part of the project were mitigated to insignificance.

**Halcyon Road Projects Master EIR**

SWCA, Inc. teamed with Dokken Engineering in 2001 to assist the County of San Luis Obispo with its project to realign the Halcyon Road and Highway 1 intersections located just south of Arroyo Grande, California. The project would utilize federal funding from the Federal Highway Administration and therefore required NEPA compliance, in addition to CEQA review. SWCA prepared the Natural Environmental Study Report (NESR), including a Wetland Delineation, Biological Assessment, and California Red-legged Frog Survey Report. SWCA prepared the Initial Study and mitigated negative declaration for this project and completed air quality analysis, socioeconomic study, noise assessment, and agricultural conversion form in support of the CEQA review. SWCA retained sub-consultants to prepare the Archaeological Survey Report, Historic Properties Survey Report, Historical Resources Evaluation Report, and Section 106 Review. SWCA subsequently teamed with Wood Rodgers on the related Halcyon Road Climbing Lane project that would widen and improve the vertical alignment of Halcyon Road, from the realignment project to the top of Nipomo Mesa. SWCA completed a draft Natural Environment Study Report, along with a noise study, a community impact study. Section 106 compliance was facilitated through coordination with Far Western Anthropological Research Group during preparation of an Extended Phase 1/Phase 2 excavations and report preparation. Both projects have been carried forward for CEQA review in a combined environmental impact report, prepared by SWCA in 2006. Scoping for the EIR included several public meetings and resulted in the identification and analysis of 20 alternatives to the proposed project. Public review of the Draft EIR will be complete in November of 2006, at which time SWCA will proceed with preparation of permit applications to Army Corps of Engineers, California Department of Fish and Game, and the Regional Water Quality Control Board.

**Craig/LMUSD Land Use Ordinance Amendment EIR**

SWCA was retained by the County of San Luis Obispo to prepare an Environmental Impact Report for the rezoning and subdivision of a 40-acre parcel to allow for the development of 16 single-family residential homesites and an 800-student middle school. The EIR was the result of a court settlement, which directed that the analysis focus only on four issue areas: water resources, transportation/circulation, cumulative effects, and growth inducing impacts. Significant, unavoidable, adverse (Class I) impacts were identified to water resources under the cumulative development scenario. All other impacts identified were mitigated to less than significant levels. Seven alternatives to the proposed project were analyzed, including the No Project alternative. The Reduced Density Alternative was identified as the Environmentally Superior Alternative. This alternative would retain the Recreation and Public Facilities land use designations of the proposed project, but would involve a reduction in the number of allowable residential units from 16 to 8 and, and the development of a 400-student elementary school rather than an 800-student middle school.

**DeVincenzo GPA/Development Plan EIR**

SWCA was retained by the County of San Luis Obispo to prepare an Environmental Impact Report for the general plan amendment of 33 acres from Residential Rural to Recreation in the Coastal Zone, and for the proposed development plan for a 125-room hotel with restaurant, shops, and conference center facilities near the community of Avila Beach. The project review area includes approximately 151 acres on both sides of Avila Beach Drive. Environmental review addressed in the EIR included: geologic hazards, grading and drainage, water supply, wastewater disposal, biological resources, cultural resources, visual resources, traffic and circulation and air quality. Key mitigation issues involved water supply from transfer of State Water allocations and private wells; wastewater disposal by an on-site package plant treatment; drainage and visual impacts related to significant grading on steep, rocky slopes; and impacts to coastal commission wetlands.

### **Fiscalini Ranch Preserve Master EIR**

SWCA has been retained by the Cambria Community Services District to prepare a Master Environmental Impact Report for the Fiscalini Ranch Preserve Public Access and Management Plan and Community Park Master Plan. The Ranch Preserve is located in the community of Cambria, and is bisected by Highway 1. The management plan includes a multi-use trail network, restoration plans, and active community park. Prior to initiation of the Master EIR, SWCA staff assisted the Cambria CSD with the Notice of Preparation and a public scoping meeting. Consultation with the County of San Luis Obispo, Cambria CSD divisions, and public interest groups was conducted during preparation of the Master EIR. Major environmental issues of concern addressed in the Master EIR include: aesthetics, air quality, biological resources, cultural resources, geology, hazards, noise, public services, and transportation/circulation. The Draft EIR is scheduled for public review in early spring of 2007.

### **Growth Management Ordinance (Title 26) Amendments EIR**

SWCA was retained by the County of San Luis Obispo to prepare an Environmental Impact Report for the proposed Countywide Growth Management Ordinance (Title 26) Amendments. The proposed project is not a "typical" CEQA project because it does not consist of a discrete set of actions involving the physical implementation of an on-the-ground project. Rather, the proposed project would create policy changes that have the potential to result in physical changes, the specifics of which are yet unknown. SWCA assisted the County in developing project objectives, researching and compiling extensive background information, and formulating a comprehensive project description prior to EIR analysis. The proposed project would be broken down into two distinct components. Within the "Countywide" component, the primary area of focus relates to the distribution of 2,596 building allocations from previous years. Subsets of this main component include the consideration of communities emerging from a moratorium, special considerations for Specific Plans, and projects including low or moderate cost housing. The second "Nipomo Mesa Area" component considers a 180-unit GMO exemption in addition to the other, Countywide, components. Significant, unavoidable, adverse (Class I) impacts were identified under both the project-specific and cumulative development scenarios to water resources, air quality, and public services and utilities. Additional environmental issues of concern addressed in the EIR included: geology, drainage, erosion and sedimentation, biologic resources, cultural resources, agricultural resources, recreation, wastewater, and traffic safety. Eight alternatives to the proposed project were analyzed, including the No Project alternative. Based on the alternatives analysis, a combination of the Mitigated Project (Alternative 7), the Redistribution of the Previous Unused Allocations by Changing the Filters (Alternative 3), the Nipomo Mesa Area Building Moratorium (Alternative 5a), and Elimination of the Mixed-Income Housing Exemptions Amendment (Alternative 4) is determined to be the Environmentally Superior Alternative (refer to EIR Section VI.E). Overall, this Combined Alternative (Alternative 8) would result in impact levels that are the least severe of the other project alternatives and would reduce impacts countywide. The Combined Alternative is the Environmentally Superior Alternative because it incorporates all EIR recommended mitigation measures, it imposes restrictions to growth in the Nipomo Mesa area where water resources and circulation systems are already at capacity, it honors the intent of the County-wide Resource Management System and allows resource capacity to determine where growth is appropriate, and it augments existing County policy in order to better protect environmental resources. Implementation of the Combined Alternative would provide an advantage over the proposed project, and would allow most of the identified impacts to be mitigated to a Class II level of insignificance. The County has not yet determined the environmentally superior alternative. The EIR recommends a moratorium on development on the Nipomo Mesa until such time as water resources are available to accommodate additional growth. Currently, the County Board of Supervisors has reduced the growth allowance for Nipomo Mesa to 1% growth a year. The Final EIR was certified in May 2006.



### **Laeitia Agricultural Cluster, Tract Map and Development Plan EIR**

SWCA is currently retained by the County of San Luis Obispo to prepare an EIR for a proposal to subdivide of 21 parcels (1,910 acres) into 106 lots, including 102 residential lots and four open space lots. The project site is located in the Agriculture and Rural Lands land use categories. The proposed residential lots would be located throughout the project site on the eastern side of Highway 101; no new development is proposed on the western side of the highway. Each residential lot would be approximately 1.0 acre each, and a building envelope approximately 0.5 acre in size would be located within each lot. Approximately 104 acres of existing vineyard would be removed to accommodate proposed development and buffer zones. Approximately 128 acres of vineyard and orchards would be replanted onsite. Development proposed within the open space lots include a homeowner's association facility, recreation center, and community center ("Ranch Headquarters"), and an equestrian facility. Issues analyzed in the EIR include aesthetics, agricultural resources, air quality, cultural resources, drainage and erosion, geology and soils, hazards, land use, noise, population and housing, recreation, transportation and circulation, wastewater, and water.

### **Rocky Canyon Quarry Subsequent EIR**

SWCA, Inc. was retained by the County of San Luis Obispo to prepare a Subsequent EIR and update the Rocky Canyon Quarry Specific Plan based on Union Asphalt, Inc.'s request for an increase of 100,000 cubic yards of aggregate per year for the first five years and possible incremental increases up to 200,000 cubic yards beginning year six. In addition to the yearly increase, the applicant is also proposing an increase in production hours. This increase in aggregate production and production hours will not require any change in the capacity method of operation of the processing plant. Previously, a Final Program EIR and Revised Program EIR was prepared by SWCA, Inc. for revisions of the Specific Plan, Development Plan, and Reclamation Plan. Both projects received the necessary approvals from the San Luis Obispo County Planning Commission and Board of Supervisors.

**APPENDIX D. SWCA CAPABILITIES CUT SHEETS**

PROPOSAL TO PROVIDE CEQA DOCUMENTATION SERVICES FOR THE CITY OF PASO ROBLES  
WWTP UPGRADE PROJECT – SAN LUIS OBISPO COUNTY, CALIFORNIA

---

## WE ALL NEED CLEAN AIR

Morro Group/SWCA prepares air quality assessments as both stand-alone technical reports or for direct inclusion into EIRs and EISs. Assessments are prepared in accordance with NEPA/CEQA guidelines. Air quality assessments include consultation with the applicable air pollution regulatory agency, a description of the existing air quality setting, calculation of short-term (construction) emissions and long-term operational emissions. SWCA can conduct modeling under various scenarios. In California, the URBEMIS modeling program is a standard tool for environmental reports. We have extensive experience developing green house gas inventories and reduction strategies. SWCA has extensive experience with various dispersion and health risk modeling also. SWCA staff have conducted indoor air quality testing and developed successful remediation programs for numerous clients in industry, government, and the private sector.

### RELEVANT PROJECTS AND EXPERIENCE:

- Greenhouse Gas Evaluation and Reduction Program for Cold Canyon Landfill Expansion
- Biofuels Evaluation for Large Diesel Fleets in Puget Sound
- AT&T Cable Project – Central Coast Segment
- Costco Air Quality Analysis
- Municipal Composting Waste Diversion for San Francisco Bay Area
- Black Ranch, 200 Unit Hotel and Facilities
- Environmental Compliance Management System for Multiple Duke Energy Co. California Power Plants

### Air Quality Services

- Clean Air Act Conformity Determinations
- Greenhouse Gas Audits
- Source and Receptor Modeling
- Odor Impact Assessments
- Documentation for EIRs/EISs
- Mitigation Development
- Technical Studies
- General Plan Air Quality and Greenhouse Gas Elements
- Large Stationary and Mobile Source Emission Evaluations
- Compliance Tracking Programs (APCD and other governmental agencies)

### Clients We Serve

- City and County Governments
- Federal Agencies (BLM, etc.)
- Large Utility Companies
- Engineering Firms
- Developers
- Biofuels Companies
- California Department of Transportation
- Energy Development Companies

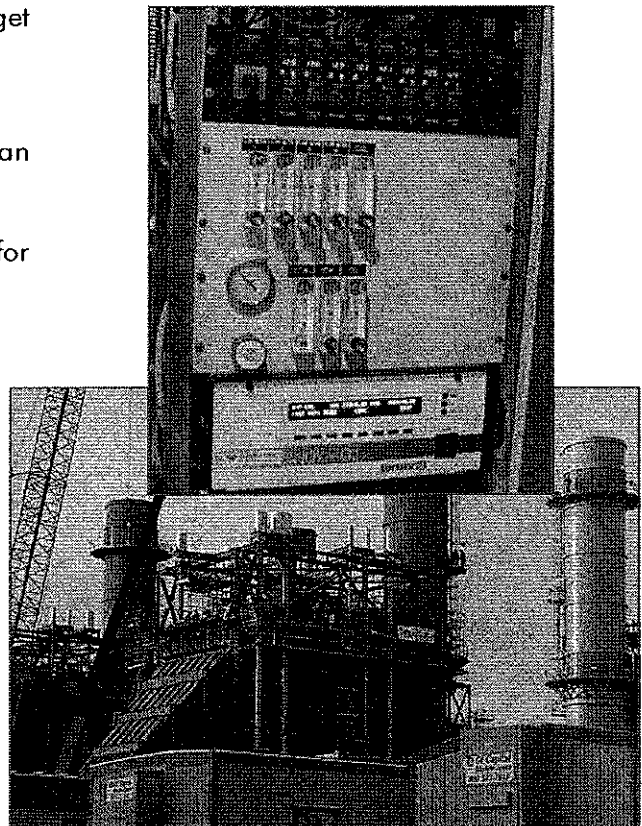


**MORRO  
GROUP**

A DIVISION OF SWCA

1422 Monterey Street, Suite C200  
San Luis Obispo, CA 93401

Tel: 805-543-7095 • [www.swca.com](http://www.swca.com)



# CULTURAL RESOURCE MANAGEMENT

## ARCHAEOLOGY

Morro Group/SWCA's cultural resources specialists provide a wide range of services to help clients achieve compliance with federal, state, and local regulations. We specialize in compliance with the National Historic Preservation Act (NHPA), the Archaeological Resources Protection Act (ARPA), the Native American Graves Protection and Repatriation Act (NAGPRA), the American Indian Religious Freedom Act (AIRFA), and the cultural resources requirements of CEQA.

Morro Group/SWCA's archaeological services include literature searches, reconnaissance studies, intensive archaeological surveys, preservation and treatment plans, memoranda of agreement, site testing/evaluations, full-scale excavation for data recovery, construction monitoring, impact mitigation management, and site preservation. Additionally, the firm maintains the laboratories and equipment required for any cultural resource undertaking.

### Archaeology Services

- Class I, II, III Cultural Resource Inventories
- Preservation and Treatment Plans
- Excavation for Data Recovery
- Construction Monitoring
- Ruins Stabilization
- Site Evaluations

### Clients We Serve

- U.S. Marine Corps
- U.S. Navy, Southwest Division
- Naval Facilities Engineering Command
- U.S. Geological Survey
- U.S. Bureau of Land Management
- U.S. Army Corps of Engineers

### RELEVANT PROJECTS AND EXPERIENCE:

- NWS Seal Beach and Corona Integrated Cultural Resources Management Plans
- Twentynine Palms Rock Art Survey
- Archaeological Evaluation and National Register Eligibility Investigation of Site CA-SDI-14,663, Marine Corps Base Camp Pendleton
- Evaluation and National Register Eligibility Investigation of Site CA-SLO-77, Piedras Blancas Light Station
- Carrizo Plain National Monument History Survey



**MORRO  
GROUP**

A DIVISION OF SWCA

1422 Monterey Street, Suite C200  
San Luis Obispo, CA 93401

Tel: 805-543-7095 • [www.swca.com](http://www.swca.com)

# CEQA AND NEPA SERVICES

## CEQA AND NEPA PROCESS PROFESSIONALS

Morro Group/SWCA's team of planners, biologists, air quality and noise specialists, and Geographic Information System specialists are able to address all aspects of environmental compliance documents, as required by the California Environmental Quality Act (CEQA) and the National Environmental Policy Act (NEPA). Morro Group/SWCA has prepared hundreds of regulatory compliance documents, ranging from Biological Resource Survey Reports for small, private developments to Environmental Impact Reports and Environmental Impact Statements for large public works projects.

Morro Group/SWCA work is prompt, accurate and comprehensive. Qualified professionals with specific experience ensure complete coverage of all issues affecting a project. You can be assured of complete evaluations and reliable answers. Our team identifies responsibilities and alternatives and provides viable, cost-effective solutions.

### RELEVANT PROJECTS AND EXPERIENCE:

- West Hills Community College District 'Farm of the Future' Master EIR
- Open Services Contract for County of San Luis Obispo Department of Planning and Building
- San Luis Obispo Creek Waterway Management Plan EIS/EIR
- County Service Area 7A Wastewater Treatment Plant Upgrade EIR
- Amberwood Housing Development EIR
- Tank Farm Gravity Sewer, Lift Station, and Force Main Project, Expanded Initial Study/Mitigated Negative Declaration



**MORRO  
GROUP**

A DIVISION OF SWCA

1422 Monterey Street, Suite C200  
San Luis Obispo, CA 93401

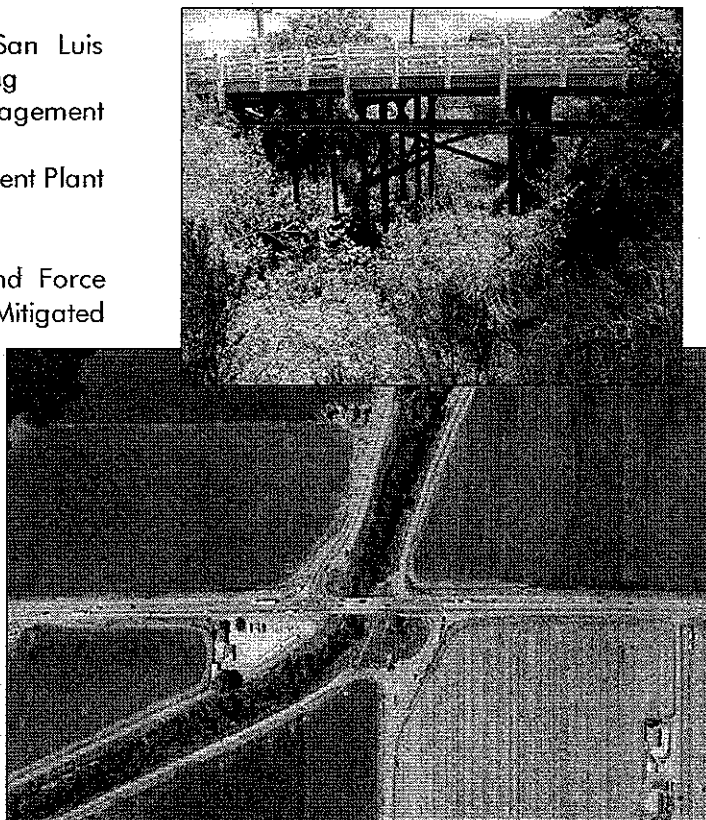
Tel: 805-543-7095 • [www.swca.com](http://www.swca.com)

## CEQA and NEPA Services

- Initial Studies / Expanded Initial Studies
- Environmental Assessments
- Environmental Impact Reports (EIR)
- Environmental Impact Statements (EIS)
- Negative Declarations and Mitigated Negative Declarations
- Biological Assessments
- Biological Resource Survey Reports
- Categorical Exemptions
- Notices of Preparation, Completion, and Determination
- Mitigation Monitoring
- EIR Findings and Staff Reports

## Clients We Serve

- City and County Governments
- California Department of Transportation
- Engineering Firms
- Local Developers
- Public Universities and Community Colleges
- Telecommunications Companies
- Mining Companies
- Waste Management Companies



# COASTAL RESOURCES

## NAVIGATING THROUGH COASTAL ENVIRONMENTS

Throughout coastal landscapes, Morro Group/SWCA assists developers and agencies in their coastal development efforts. As your environmental partner our objective is to work together as stewards of coastal ecosystems while achieving your project goals.

Morro Group/SWCA's team of planners, resource specialists, and biologists are able to address all aspects of regulatory issues within the coastal zone. Our biological resources staff has specialized experience conducting surveys for special-status species and habitats, and preparing and implementing monitoring and restoration plans in coastal areas. Our planners and resource specialists are currently under contract with the County of San Luis Obispo and University of California to prepare environmental determinations and staff reports for public and private projects within the Coastal Zone, coastal policy analysis and findings, and California Coastal Commission applications.

### RELEVANT PROJECTS AND EXPERIENCE:

- Morro Bay Maintenance Dredging
- University of California Santa Barbara Campus-wide Biological Resources Mapping for the Long Range Development Plan EIR
- Fiscalini Ranch Preserve Master Environmental Impact Report
- Guadalupe Oil Field Environmental Administration
- San Geronimo Ranch Open Space Easement
- Estero Property Baseline Inventory

### Coastal Resource Services

- Threatened and Endangered Species Surveys
- Habitat Assessments
- Coastal Wetland Delineations
- Visual Impact Analysis
- Storm Water Pollution Prevention Plans
- Biological Constraints Analysis
- Biological Monitoring Plans and Reports
- Coastal Development Permit Applications and Environmental Determinations
- Mitigation Plans and Monitoring Endangered Species Act Compliance
- California Coastal Act Compliance
- Marine Mammal Protection Act Compliance
- Clean Water Act, Section 404 and 401 Permit Applications
- Conformance with Local Ordinances, General Plan Standards, and Coastal Policy Analysis

### Clients We Serve

- City and County Governments
- Cayucos Land Conservancy
- Trust for Public Lands
- AT&T
- Union Oil Company (UNOCAL)
- Los Osos Community Services District
- Cambria Community Services District



**MORRO  
GROUP**

A DIVISION OF SWCA

1422 Monterey Street, Suite C200  
San Luis Obispo, CA 93401

Tel: 805-543-7095 • [www.swca.com](http://www.swca.com)



# CONSTRUCTION MONITORING

## ENVIRONMENTAL COMPLIANCE SHOULDN'T BE PAINFUL

Environmental permit requirements and regulations associated with construction projects can be complicated. Construction companies without extensive environmental regulatory experience can unintentionally violate important mandates. Violations can lead to increased agency involvement, and result in delays and unanticipated costs for restoration and mitigation of environmental impacts.

Morro Group/SWCA's team of environmental compliance experts and construction monitors know all aspects of the construction process. Our goal is to ensure that applicants and contractors understand the regulatory issues and the consequences of non-compliance, and to minimize the potential for non-compliance issues to arise. We can anticipate environmental areas of concern, clarify regulatory restrictions, prepare Mitigation Monitoring and Reporting Plans, and provide project-specific worker training, biological monitoring, and project documentation to assist you in establishing and maintaining regulatory compliance.

We maintain strong relationships with regulatory staff, and work with them to clarify project needs and ensure timely resolution of environmental issues. Our experienced environmental compliance field monitors consistently provide clear regulatory guidance to keep your project within permit limits, for any situation you may encounter during the construction process.

### RELEVANT PROJECTS AND EXPERIENCE:

- Stenner Creek Bridge Construction Monitoring
- Poly Canyon Village Development Construction Monitoring
- Cambria Elementary School Construction Monitoring
- AT&T SLO to Los Angeles Fiber Optic Installation



**MORRO  
GROUP**

A DIVISION OF SWCA

1422 Monterey Street, Suite C200  
San Luis Obispo, CA 93401

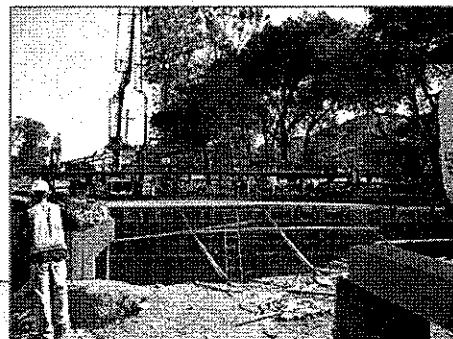
Tel: 805-543-7095 • [www.swca.com](http://www.swca.com)

### Construction Monitoring Services

- Riparian Restoration Plans
- Agency Consultation/Clarification
- Regulatory Constraints Timeline and Summary Compilation
- Exclusion Area Identification
- Construction Worker Training
- Species Relocation
- Water Quality Monitoring
- Documentation and Reporting
- Air Quality and Noise Monitoring
- SWPPP Compliance Documentation
- Rain Event Monitoring
- Special-status Species and Habitats Pre-construction Surveys
- Habitat Setback Identification

### Clients We Serve

- City and County Governments
- Caltrans
- Cal Poly San Luis Obispo
- Private Sector Clients
- CA Army National Guard
- Telecommunication Firms





# ENDANGERED SPECIES

## PROTECTING SENSITIVE BUTTERFLIES

Butterflies often have unique life histories, such that particular species are only able to feed and lay eggs on one species of host plant. Expansion of residential and commercial land development has extirpated many populations of native butterflies from parts of their historical range and continue to threaten remaining populations. Specific habitat requirements combined with threats of habitat loss and alteration make butterflies particularly vulnerable to population declines. Butterflies are so sensitive to environmental change that they can serve as valuable indicators of potentially harmful environmental shifts.

Morro Group/SWCA biologists have conducted habitat assessments, presence/absence surveys, and population censuses to determine locations, distributions, and abundances of sensitive butterfly populations throughout the Central Coast. Morro Group/SWCA has also conducted capture and relocation surveys for hundreds of sensitive Morro blue butterflies under informal consultation with U.S. Fish & Wildlife Service. If projects have sensitive butterflies issues, we have experience planning restoration and mitigation efforts, including Habitat Conservation Plans, for multiple protected butterflies species found in California. Our biologists have also participated in habitat restoration efforts and conducted construction monitoring for sensitive butterfly species, such as monarch butterflies and Smith's blue butterflies.

### RELEVANT SPECIES EXPERIENCE:

- Morro Bay blue butterfly
- Monarch butterfly
- Smith's blue butterfly



**MORRO  
GROUP**

A DIVISION OF SWCA

1422 Monterey Street, Suite C200  
San Luis Obispo, CA 93401

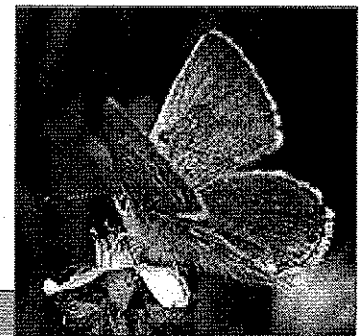
Tel: 805-543-7095 • [www.swca.com](http://www.swca.com)

### Sensitive Butterfly Services

- Habitat Assessments
- Population Censuses
- Capture and Relocation Surveys
- Pre-construction Surveys
- Construction Monitoring
- Worker Education
- Endangered Species Consultation with U.S. Fish & Wildlife Service
- Federal, State, and Local Consultation
- Habitat Management and Restoration Plans
- Project-specific Mitigation Measures and Implementation

### Clients We Serve

- Los Osos Community Services District
- U.S. National Park Service
- County of San Luis Obispo



# ENDANGERED SPECIES

## KEEP OFF THE PLANTS!

Morro Group/SWCA has performed numerous general botanical assessments and focused rare plant surveys for a wide range of clients within San Luis Obispo and Santa Barbara Counties. Projects have ranged from single-family lots to planned residential developments covering several hundred acres. Our botanists are very knowledgeable about the vegetative diversity of the central and south coast area, and specialize in rare plant identification for species such as La Graciosa thistle and Santa Susana tarplant, a California rare species closely related to the Gaviota tarplant.

Morro Group/SWCA staff are experienced in working with land use applicants and public agencies to evaluate the effects of proposed actions relative to recovery goals for sensitive plants and environmental regulations. Morro Group/SWCA botanists have successfully developed and implemented numerous effective mitigation and monitoring plans for rare plant populations, including conservation easements, to compensate for the loss of rare plants due to land development. Where appropriate, Morro Group/SWCA has performed construction monitoring for projects with sensitive plant issues and consulted with appropriate agencies to ensure compliance with requirements of both the Federal and California Endangered Species Acts.

## RELEVANT SPECIES EXPERIENCE:

- Lompoc yerba santa
- La Purisima manzanita
- Shagbark manzanita
- Gaviota tarplant
- Gambel's watercress
- La Graciosa thistle
- Santa Susana tarplant
- Cambria morning glory
- Pismo clarkia
- Congdon's tarplant
- Black-flowered figwort
- Mesa horkelia
- Slender mariposa lily
- Ventura marsh milk-vetch
- Burton Mesa chaparral
- Southern tarplant



**MORRO  
GROUP**

A DIVISION OF SWCA

1422 Monterey Street, Suite C200  
San Luis Obispo, CA 93401

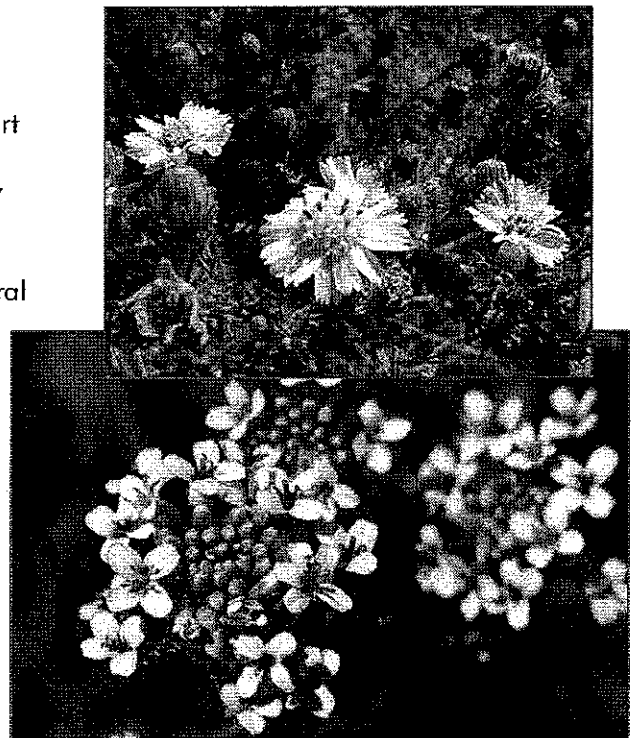
Tel: 805-543-7095 • [www.swca.com](http://www.swca.com)

## Sensitive Plants Services

- Botanical Resources Surveys
- Plant Inventories
- Focused Special-status Plant Surveys
- Mapping of Rare Plant Populations
- Sensitive Vegetative Community Identification and Mapping
- Mitigation and Monitoring Plans
- Restoration Plans
- Pre-construction Surveys
- Construction Monitoring
- Regulatory Compliance – CEQA, NEPA, CDFG, County

## Clients We Serve

- City and County Governments
- Caltrans
- Engineering Firms
- Local Developers
- Schools and Universities
- Public Utilities
- Mining companies
- Water Districts
- Public Utilities



# ENDANGERED SPECIES

## PROTECTING SENSITIVE WILDLIFE

Morro Group, a Division of SWCA, has extensive experience working with threatened and endangered species found in California. Morro Group/SWCA staff is adept at working through all levels of compliance with both the Federal and California Endangered Species Acts, from protocol level surveys to obtaining federal recovery permits, for projects ranging from small residential lots to large-scale projects and developments.

Morro Group/SWCA holds endangered species permits from the U.S. Fish & Wildlife Service which authorizes approved staff members to perform presence/absence surveys for, as well as handle, the endangered Morro shoulderband snail. Morro Group/SWCA biologists have performed over 50 surveys and habitat assessments for these species. Morro Group has also conducted over 90 habitat assessments and pre-construction surveys for the endangered San Joaquin kit fox and maintains a staff of County-approved biologists to complete these surveys. Morro Group/SWCA has also been retained to conduct training sessions for construction crews working in known or potential habitat for protected species.

Morro Group/SWCA has successfully navigated through Section 7 and 10 consultations with U.S. Fish & Wildlife Service and has prepared several Habitat Conservation Plans for species protected by the Endangered Species Act. Morro Group/SWCA biologists have authored hundreds of mitigation and monitoring plans and have also overseen implementation of those plans.

### RELEVANT SPECIES EXPERIENCE:

- Morro shoulderband snail
- California red-legged frog
- San Joaquin kit fox
- Southern steelhead
- Blunt-nosed leopard lizard
- Arroyo toad



**MORRO  
GROUP**

A DIVISION OF SWCA

1422 Monterey Street, Suite C200  
San Luis Obispo, CA 93401

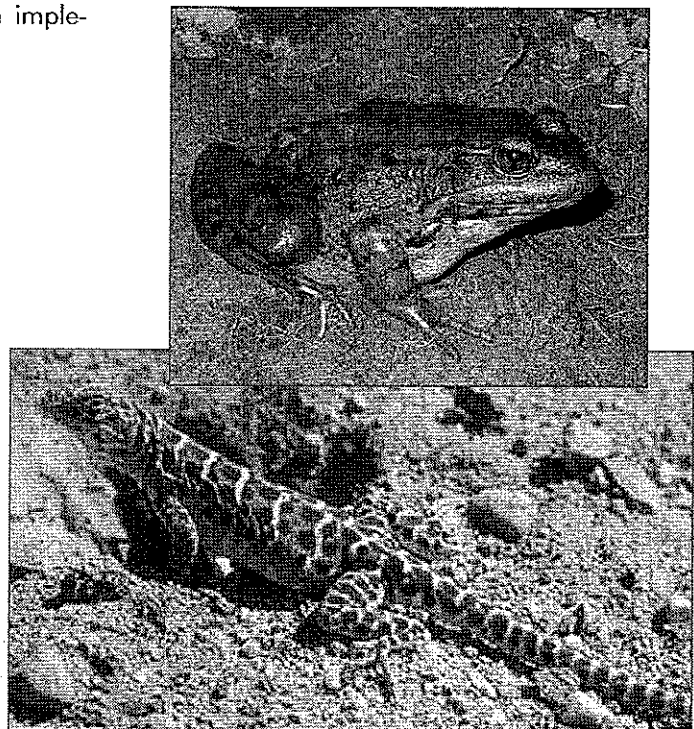
Tel: 805-543-7095 • [www.swca.com](http://www.swca.com)

### Sensitive Wildlife Services

- Habitat Assessments
- Protocol-level Presence/Absence Surveys
- Rare Plant Surveys
- Section 7 and 10 Consultations with U.S. Fish and Wildlife Service
- Habitat Conservation Plan Writing and Implementation
- Mitigation and Monitoring Plans
- Pre-construction Surveys
- Construction Monitoring
- Morro shoulderband snail 10(a)(1)(a) Permit

### Clients We Serve

- City and County Governments
- California Department of Transportation
- UCSB/Cal Poly San Luis Obispo
- Private Sector Clients
- CA Army National Guard



# CULTURAL RESOURCE MANAGEMENT

## TRIBAL CONSULTING AND ETHNOGRAPHY

Morro Group/SWCA's cultural resources specialists provide a wide range of services to help clients achieve compliance with federal, state, and local regulations. We specialize in compliance with the National Historic Preservation Act (NHPA), the Archaeological Resources Protection Act (ARPA), the Native American Graves Protection and Repatriation Act (NAGPRA), the American Indian Religious Freedom Act (AIRFA), and the cultural resources requirements of CEQA.

Morro Group/SWCA offers a unique service in the world of cultural resource management: Native American consultation and ethnographic services. Our purpose is to assist our clients in achieving their project goals while meeting regulatory requirements and developing creative solutions to complex resource management problems. If Sacred Lands or Traditional Cultural Properties, (TCPs) are present in a project area, they are subject to the same impacts as archaeological sites.

Morro Group/SWCA has decades of experience consulting on cultural resources projects with federal, state, and local agencies, including the Office of Historic Preservation (OHP), Federal Energy Regulatory Commission (FERC), U.S. Forest Service (USFS), U.S. Bureau of Reclamation, BLM, and the National Park Service.

### RELEVANT PROJECTS AND EXPERIENCE:

- Section 106 Consultation with Indian Tribes
- Utah Department of Transportation Section 106 Tribal Consultation Workshop
- Table Mountain Wind Farm Ethnography Study



**MORRO  
GROUP**

A DIVISION OF SWCA

1422 Monterey Street, Suite C200  
San Luis Obispo, CA 93401

Tel: 805-543-7095 • [www.swca.com](http://www.swca.com)

### Ethnographic Services

- Native American Graves Protection and Repatriation Act Consultations
- American Indian Religious Freedom Act Consultations
- Archival Research
- Ethnographic and Ethno-Archaeological Studies
- Inventory and Evaluation of Traditional Cultural Properties
- Physical Anthropology and Osteology

### Clients We Serve

- Departments of Transportation
- Office of Historic Preservation
- U.S. Forest Service
- Bureau of Land Management
- National Park Service



# GIS AND MAPPING CAPABILITIES

## CLARITY THROUGH GRAPHIC REPRESENTATION

GIS technologies are changing the way we handle spatial data. Everyday, scientists, managers and the general public rely more heavily on geographic data to organize, research, or determine spatial relationships. With the power of GIS, Morro Group/SWCA is helping clients to improve the quality of life, protect the public, and enhance our environment.

Morro Group/SWCA provides a full range of GIS / Technology services including project consulting, spatial analyses, GPS data processing / surveys, editing and data conversions. Morro Group/SWCA GIS analysts have supported projects for government agencies, transportation and environmental agencies, as well as private companies to analyze and display geographic and environmental data. Expertise ranges from basic mapping concepts of projections and coordinate systems to geo-processing data management, custom map application development, spatial analysis and image processing services. Morro Group/SWCA GIS staff integrate essential mapping and spatial data resources to provide clients and regulators with multi-layered analyses to address the challenges that arise during project design, permitting and construction.

## RELEVANT PROJECTS AND EXPERIENCE:

- Caltrans State Route 180 Biological Resources Screening Report
- UCSB Long-Range Development Plan, Campus-wide Biological Resources Mapping
- San Luis Obispo Creek Waterway Management Plan/EIR Aquatic and Wetland Resources Mapping
- AT&T/Asia America Gateway Terrestrial Conduit Route Biological Assessment Report



**MORRO  
GROUP**

A DIVISION OF SWCA

1422 Monterey Street, Suite C200  
San Luis Obispo, CA 93401

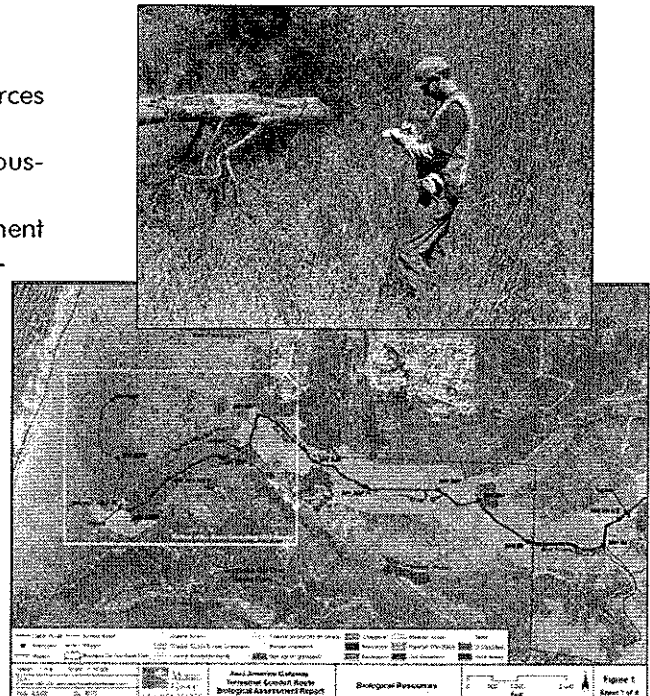
Tel: 805-543-7095 • www.swca.com

## GIS and Mapping Services

- Wetland Delineations and Impact Analysis
- Sensitive Resource Mapping
- Habitat Mapping
- GPS Data Collection using Trimble Differential GPS
- Geodatabase Design and Population
- GIS Based Decision Support Tools
- GIS Data Modeling and Analysis
- Data Compilation and Presentation
- Visual Impact Analysis
- Computer aided drafting (CAD) Services and Data Management
- California Natural Diversity Database (CNDDB) Mapping
- Demographic and Census Data Analysis
- Opportunities and Constraints Analysis

## Clients We Serve

- County of San Luis Obispo
- University of California, Santa Barbara
- AT&T
- Trust for Public Lands
- Caltrans: District 5, District 6
- National Guard/Camp San Luis Obispo
- City of San Luis Obispo
- Nolte Associates
- County of Santa Barbara
- Parsons Transportation Group



# CULTURAL RESOURCE MANAGEMENT

## HISTORIC PRESERVATION

Morro Group/SWCA's cultural resources specialists provide a wide range of services to help clients achieve compliance with federal, state, and local regulations. We specialize in compliance with the National Historic Preservation Act (NHPA), and the cultural resources requirements of CEQA.

Morro Group/SWCA's historic preservation services include archival research, resource surveys of historic buildings, historical overviews, preservation plans, interpretive plans, National Register nominations, and evaluation and excavation of historical archaeological sites. Extensive experience in determinations of eligibility for listing in the National Register of Historic Places qualifies Morro Group/SWCA staff to evaluate the significance of historic properties with efficiency and accuracy as well as negotiate preservation strategies for clients through the California Office of Historic Preservation and the National Park Service. All services conform to the Secretary of the Interior's Standards for Historic Preservation.

### Historic Preservation

- Archival Research
- Evaluations of the Built Environment
- HABS / HAER Documentation
- Historical Overviews
- Preservation Plans
- Interpretive Plans
- National Register Nominations

### Clients We Serve

- U.S. Marine Corps
- U.S. Navy, Southwest Division
- Naval Facilities Engineering Command
- U.S. Geological Survey
- U.S. Bureau of Land Management
- U.S. Army Corps of Engineers

### RELEVANT PROJECTS AND EXPERIENCE:

- Live Oak General Plan Update
- Navy IDIQ Task Order #3: Survey and Evaluation of Buildings 805, 1264, and 1179, Port Hueneme, California
- Navy IDIQ #5, Historic Resources Survey and Evaluation, Port Hueneme, California
- NWS Seal Beach and Corona Integrated Cultural Resources Management Plans
- Naval Air Station North Island Historic Building Survey and Evaluation
- Cultural Resources Survey for the SR 99 Manteca 6-Lane Widening



**MORRO  
GROUP**

A DIVISION OF SWCA

1422 Monterey Street, Suite C200  
San Luis Obispo, CA 93401

Tel: 805-543-7095 • [www.swca.com](http://www.swca.com)

## PROTECTING THE AMBIENT ENVIRONMENT

Morro Group/SWCA provides clients with technical noise and vibration assessments for projects throughout California. Noise investigations and reports are prepared in a manner consistent with the local agency noise element and any other applicable noise standards or thresholds. Morro Group/SWCA has prepared multiple stand-alone noise investigations or EIR-level reports focusing on stationary and transportation noise impacts. Morro Group/SWCA uses precision integrating sound level meters to gather noise data for each project. Based on measured and forecast impacts, we determine appropriate mitigation measures and calculate efficiency (e.g., sound wall heights and area of protection).

We have also prepared mitigation programs for unique areas, such as logging on private property adjacent to nesting areas for endangered bird species. In these cases we have defined allowable work periods, equipment specifications, and helicopter flight patterns. Such specialized work involves intensive field monitoring in which our staff work closely with resource protection agencies and the client to achieve mutually acceptable outcomes.

### RELEVANT PROJECTS AND EXPERIENCE:

- Airport Sound Level Measurement & Forecasting, San Bruno
- Traffic Noise Evaluation for new Housing in San Joaquin County
- Quarry Blasting Noise & Vibration Monitoring, Eel River
- Factory Worker Noise Exposure Evaluations, Oakland
- Wineries and Agriculture, Sonoma and San Luis Obispo Counties
- General and Specific Plans, Napa and San Luis Obispo Counties
- Asphalt Batch Plant Siting, Placer County
- Endangered Species/Logging Studies, Humboldt Redwoods State Park

### Noise/Vibration Monitoring Services

- Community and Site-specific Noise Measurements
- Vibration Monitoring and Evaluation
- Technical Noise Reports
- Airport Noise Studies
- Code Compliance Investigations
- Documentation for Environmental Impact Reports/Statements
- General Plan Noise Elements
- Mitigation Monitoring & Management Plans
- Traffic Noise Modeling using Stamina, Sound2000 and SoundPLAN.
- Noise studies using Caltran's Traffic Noise Analysis Protocol and the Technical Noise Supplement

### Clients We Serve

- Local and City Governments
- Lumber Companies
- Paving and Construction Companies
- Engineering firms
- Developers
- Private Clients
- State of California
- Agriculture

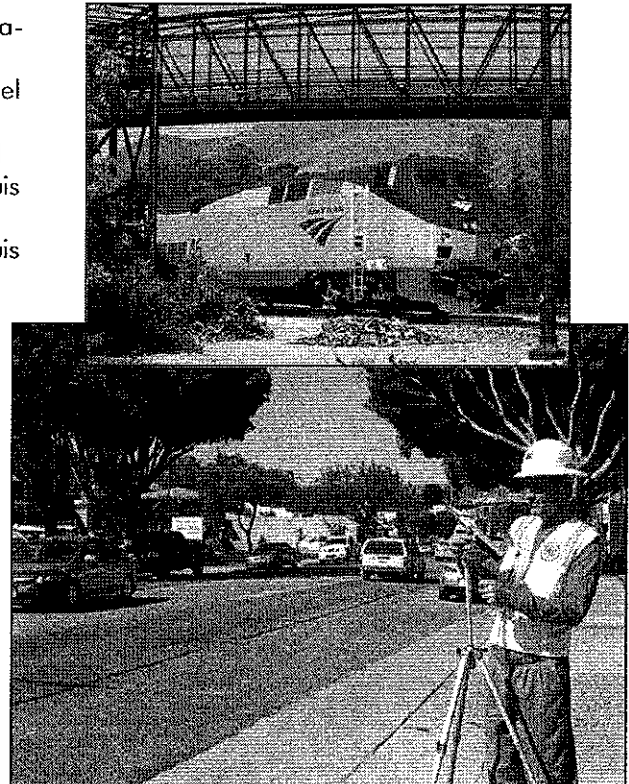


**MORRO  
GROUP**

A DIVISION OF SWCA

1422 Monterey Street, Suite C200  
San Luis Obispo, CA 93401

Tel: 805-543-7095 • [www.swca.com](http://www.swca.com)



# PALEONTOLOGICAL RESOURCE MANAGEMENT

## PALEONTOLOGY

Morro Group/SWCA's paleontological staff has more than 20 years of combined experience in paleontological consulting services throughout California and the western U.S. Because we have one of the largest paleontology staffs of any private consulting firm in the country, Morro Group/SWCA can tackle paleontology projects of any scale quickly and cost-effectively.

Morro Group/SWCA combines extensive experience with innovative, cost-effective, and common sense strategies for the assessment, management, mitigation, and conservation of paleontological resources. We provide all aspects of paleontological resource services, including monitoring and mitigation, third-party review, assessment, collection, documentation, analysis, preparation, conservation, and education. We assist our clients in obtaining paleontological permits and clearances, facilitate the achievement of paleontological resource management objectives, and design and produce educational and interpretive displays. Paleontology sections of NEPA and CEQA documents prepared by our staff are both science-based and readable.

Morro Group/SWCA is fully permitted to provide services across the West and maintains repository agreements with major regional museums. We have expertise with federal, state and local government regulations and compliance standards, and we conduct studies without interrupting project schedules. We have a solid reputation for prompt preparation of deliverables.

### RELEVANT PROJECTS AND EXPERIENCE:

- NWS Seal Beach and Corona Integrated Cultural Resources Management Plans
- Evaluation and Investigation of Site CA-SDI-14,663, Marine Corps Base Camp Pendleton
- Monitoring During Excavations for the Sewer Replacement Group 623B Project, U.S. Naval Station, San Diego



**MORRO  
GROUP**

A DIVISION OF SWCA

1422 Monterey Street, Suite C200  
San Luis Obispo, CA 93401

Tel: 805-543-7095 • [www.swca.com](http://www.swca.com)

### Paleontologic Services

- Monitoring and Mitigation
- Third-party Review
- Assessment, Collection, Documentation, Analysis, Preparation, Conservation, and Education
- Educational and Interpretive Displays
- NEPA and CEQA Documents

### Clients We Serve

- Departments of Transportation
- U.S. Forest Service
- Bureau of Land Management
- National Park Service
- U.S. Navy, Southwest Division





# PERMITTING CAPABILITIES

## AGENCY CONSULTATION AND COORDINATION

Morro Group/SWCA works closely with regulatory agencies to reach the permitting goals of our clients. Whether a project has the potential to impact wetlands, "Other Waters" of the U.S., or federal and state listed species, Morro Group/SWCA has the knowledge, experience, and working relationships with important agency contacts to assist our clients in obtaining regulatory permits in a timely manner. We have conducted agency consultation and coordination for a variety of projects requiring regulatory permits for both public and private applicants, including preparing wetland delineations and jurisdictional determinations, Section 404 permit applications to U.S. Army Corps of Engineers, Section 401 Water Quality Certification permit applications to Regional Water Quality Control Board, California Department of Fish and Game (CDFG) Section 1602 Streambed Alteration Agreements, and California Coastal Development Permits. Our staff biologists are also experienced with informal and formal consultation with agency biologists for projects with potential impacts to special-status species, including Federal Endangered Species Act (FESA) Section 7 Consultations to obtain Biological Opinions and Incidental Take Statements; FESA Section 10 Habitat Conservation Planning and Incidental Take Permits; CDFG Section 2081 Incidental Take Permits; collecting, marking, and trapping activities requiring valid CDFG Scientific Collecting Permits, and obtaining agency approvals to work with listed species such as steelhead, California red-legged frog, and others.

## RELEVANT PROJECTS AND EXPERIENCE:

- Guadalupe Oil Field Cleanup Project
- West and East Biddle Ranch Residential Clusters
- Costco Development Project
- Hollister Road Bridge Replacement
- Lewis Avenue Bridge Project
- McMahan Residential Development



**MORRO  
GROUP**

A DIVISION OF SWCA

1422 Monterey Street, Suite C200  
San Luis Obispo, CA 93401

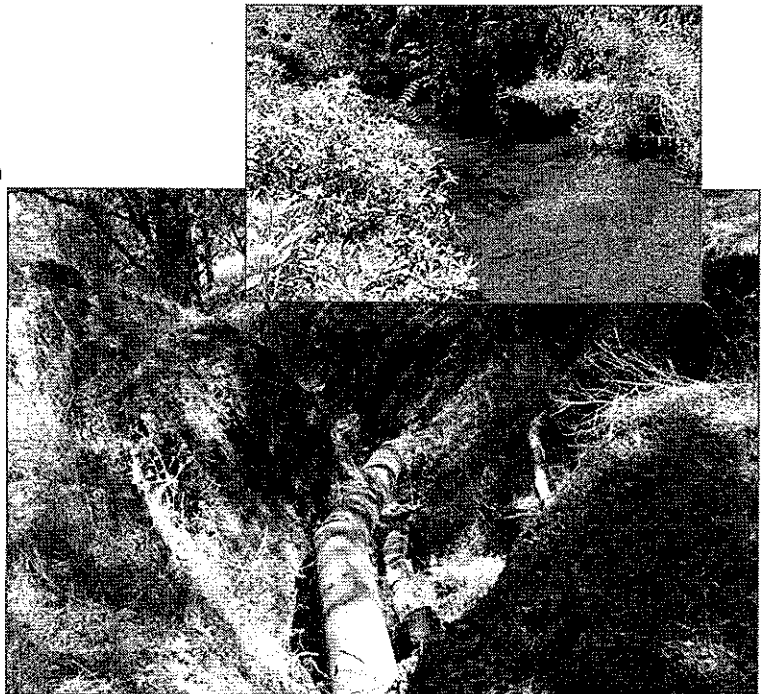
Tel: 805-543-7095 • [www.swca.com](http://www.swca.com)

## Permitting Services

- Clean Water Act Section 404 Permits – Discharge of Dredged or Fill Material into Waters of the U.S.
- Clean Water Act Section 401 Permits – Water Quality Certification
- CDFG Section 1602 Streambed Alteration Agreements
- California Coastal Act Coastal Development Permits
- Endangered Species Act Section 7 Consultations with U.S. Fish and Wildlife Service and National Marine Fisheries Service
- Habitat Conservation Planning and Endangered Species Act Section 10 Incidental Take Permits
- CDFG Section 2081 Incidental Take Permits
- Activities Requiring CDFG Scientific Collecting Permits

## Clients We Serve

- Cities and Counties
- California Department of Transportation
- Military
- Engineering and Architecture Firms
- Public and Private Project Applicants
- Public Utilities
- Schools and Universities



# PLANNING CAPABILITIES

## LOCAL GOVERNMENT ASSISTANCE

Morro Group/SWCA has provided assistance to local government planning staff in a variety of jurisdictions throughout California. Our staff is proficient at providing professional experience for a variety of projects including general plan and ordinance amendments, grading plans, habitat restoration and enhancements, residential development, utilities, commercial development, wireless telecommunications facilities, wineries, community parks, schools, transportation projects, subdivisions, and lot line adjustments.

We are capable of managing and facilitating discretionary permit applications and environmental determinations, and providing a range of services including: application completeness review, consultation with regulatory, responsible, and advisory groups; coordinating with agency staff, the applicant, and interested members of the public; preparation of environmental determination documents; preparation of staff reports, conditions of approval, and findings; and, conducting presentations for advisory groups and hearing bodies. Qualified professionals with planning and conflict resolution experience ensure complete and objective coverage of all issues affecting a project.

## RELEVANT PROJECTS AND EXPERIENCE:

- County of San Luis Obispo Department of Planning and Building Master Services Agreement,
- County of San Luis Obispo Department of General Services Master Services Agreement
- San Miguel Ranch General Plan Amendment Environmental Administration
- Guadalupe Oil Field Environmental Administration
- Los Osos Wastewater Treatment Plant On-Call Assistance



**MORRO  
GROUP**

A DIVISION OF SWCA

1422 Monterey Street, Suite C200  
San Luis Obispo, CA 93401

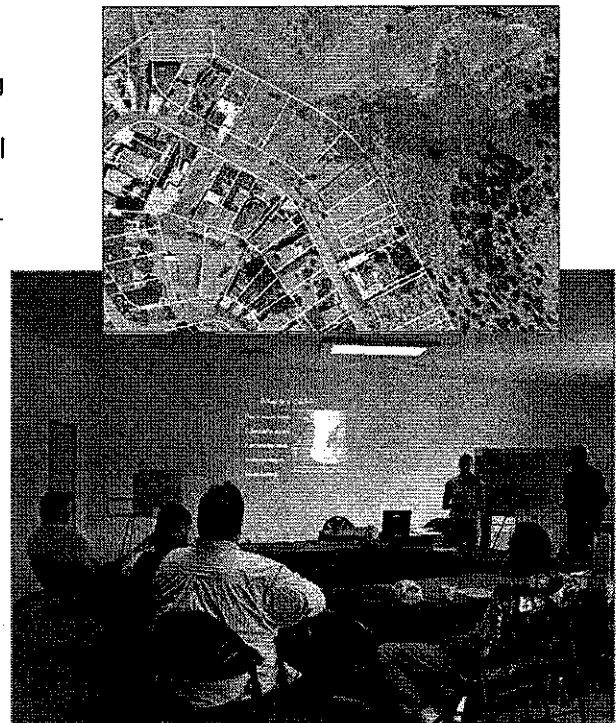
Tel: 805-543-7095 • [www.swca.com](http://www.swca.com)

## Local Government Assistance Services

- Discretionary Permit Processing
- Agency and Advisory Group Consultation
- Conflict Resolution among Stakeholders, Agencies, and Interested Parties
- Management and Facilitation of Environmental Determination Documents
- Coordination of Local and State Noticing Requirements
- Preparation of Staff Reports, Conditions of Approval, Findings, and Resolutions
- Conducting Presentations for Advisory Groups and Hearing Bodies

## Clients We Serve

- County of San Luis Obispo Departments of Planning and Building, Public Works and General Services
- County of Santa Barbara Planning and Building Department and Department of Public Works
- City of King
- City of Coalinga
- City of Chowchilla
- City of Modesto



# WETLAND AND RIPARIAN RESOURCES AND RESTORATION

## PROTECTING AND RESTORING A VITAL RESOURCE

Projects that include wetland and riparian issues require specialized knowledge and experience. Morro Group/SWCA regularly addresses projects involving ACOE, CDFG, and CCC jurisdictional areas, and has experience with all phases of such projects from initial biological assessment and wetland delineation to permit application, construction monitoring, mitigation planning, and post-project mitigation monitoring. We have established efficient working relationships with ACOE and CDFG staff, and have been very successful in determining mitigation needs and obtaining permits for projects involving jurisdictional areas.

Morro Group/SWCA botanists and soil scientists have performed over 50 wetland delineations for public and private projects. Delineations have ranged from routine assessments to forensic determinations on sites disturbed by grading or fill activities. We have prepared and implemented numerous mitigation and revegetation plans per agency requirements, including creation and restoration of wetland and riparian habitats, vegetation management plans, and control of invasive species.

Our permit specialists are experienced in preparing jurisdictional information packages and complete, signature-ready permit applications. Morro Group/SWCA biologists are also federally permitted to perform surveys for the protected California red-legged frog often found in local wetland habitats.

### RELEVANT PROJECTS AND EXPERIENCE:

- CAARNG Camp San Luis Obispo Bridges 101, 102, 106, and 107 Wetland Assessments and Habitat Restoration
- Boysen Ranch Restoration Area in San Luis Obispo
- Santa Cruz Highway 1 HOV Wetland Delineations
- UCSB LRDP Wetland Assessments



**MORRO  
GROUP**

A DIVISION OF SWCA

1422 Monterey Street, Suite C200  
San Luis Obispo, CA 93401

Tel: 805-543-7095 • [www.swca.com](http://www.swca.com)

### Wetland and Riparian Resources Services

- Wetland Delineations
- Wetland Function and Value Assessments
- Special-status Species Surveys
- Nesting Bird Surveys
- Restoration Monitoring
- Vegetation Management
- Native Seed Collection
- Riparian Restoration Plans
- Wetland Creation and Restoration Plans
- Habitat Mitigation and Monitoring Plans
- Invasive Species Management Plans
- Clean Water Act – Section 404 (ACOE)
- Section 401 Water Quality Certification (Regional Water Quality Control Board)
- Section 1600 Streambed Alteration Agreement (CDFG)
- Endangered Species Act – (USFWS)

### Clients We Serve

- City and County Governments
- Caltrans
- UCSB/Cal Poly San Luis Obispo
- Private Sector Clients
- CA Army National Guard



# WIND POWER SERVICES

## POWER THROUGH NATURE

Due to an overwhelming need for a cleaner and more sustainable alternative to fossil fuel energy production, and through technological advances and education, production of wind power generating facilities is on the rise. SWCA can provide wind power clients with a number of services and documents including Fatal Flaw/Environmental Due Diligence Analyses, bird and bat field surveys, environmental assessments and environmental impact statements, visual resource assessments, cultural and paleontological resource reviews and inventories, tribal consultations, public involvement and meeting facilitation, development planning, and GIS mapping. SWCA has conducted a number of environmental fatal flaw analyses for proposed wind power sites and transmission line corridors in the Intermountain West. The primary focus of these studies is to determine if and to what extent the construction and use of wind turbines would affect threatened, endangered, and sensitive plant and animal species and use of the proposed project areas by migratory birds (particularly raptors), bats, and native ungulates.

To help our clients comply with NEPA, our regulatory specialists stay abreast of evolving federal regulations, relevant agency policies and procedures, and NEPA related case law. SWCA's multidisciplinary project teams have completed a wide variety of NEPA compliance projects at all three levels of NEPA documentation: Categorical Exclusions, Environmental Assessments, and Environmental Impact Statements. Successful NEPA compliance projects have involved energy developments; utility corridor clearances; land exchanges; resource management plans, mining activities; airport, railroad and highway projects; water developments; and a variety of other public and private undertakings.

### RELEVANT PROJECTS AND EXPERIENCE:

- Table Mountain Wind Generating Facility
- SeaWest WindPower Condon Facility Wildlife Casualty Assessment
- Golden Prairie Wind Farm
- Padre Island National Seashore Offshore Wind Project



**MORRO  
GROUP**

A DIVISION OF SWCA

1422 Monterey Street, Suite C200  
San Luis Obispo, CA 93401

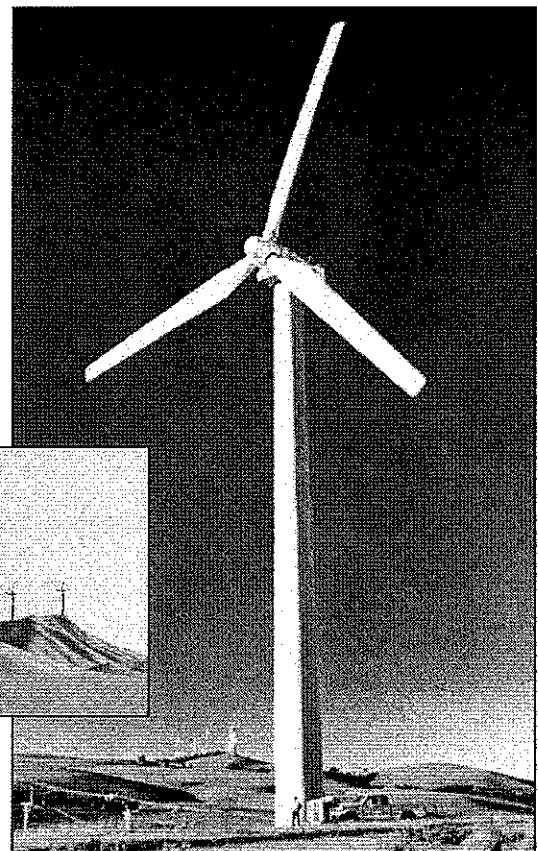
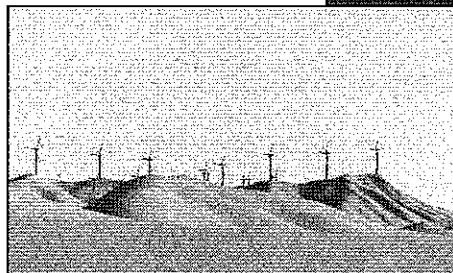
Tel: 805-543-7095 • [www.swca.com](http://www.swca.com)

### Wind Power Services

- Fatal flaw/Environmental Due Diligence Analyses
- Bird and Bat Field Surveys
- Environmental Assessments and Environmental Impact Statements
- Visual Resource Assessments
- Cultural and Paleontological Resource Reviews and Inventories
- Tribal Consultations
- Public Involvement and Meeting Facilitation
- Development Planning
- GIS Mapping

### Clients We Serve

- Acciona Wind Energy USA
- RES North America, LLC
- Tasco Engineering
- Wasatch Wind
- Foresight Energy
- Texas Wind Power Company
- AES Wind Generation
- SeaWest, Inc.
- Babcock and Brown



RESOLUTION NO. 08- ###

A RESOLUTION OF THE CITY COUNCIL OF THE CITY OF PASO ROBLES  
APPROPRIATING FUNDS AND AWARDED A CONTRACT  
TO MORRO GROUP FOR PROFESSIONAL CEQA DOCUMENTATION SERVICES ASSOCIATED  
WITH A PROPOSED FUTURE WASTEWATER TREATMENT PLANT REHABILITATION

---

WHEREAS, the City of Paso Robles owns and operates a trickling filter wastewater treatment plant (WWTP) at 3200 Sulfur Springs Road; and

WHEREAS, the WWTP operates under a permit from the California State Water Quality Control Board under National Pollutant Discharge Elimination System (NPDES) permit CA0047953; and

WHEREAS, the permit was renewed in May, 2004 with more stringent discharge requirements then had been required in the past permit; and

WHEREAS, the City of Paso Robles must upgrade the WWTP to meet the more stringent discharge requirements as required by the Water Quality Control Board; and

WHEREAS, the process associated with design and possible State funding will require that California Environmental Quality Act (CEQA) documentation must be provided; and

WHEREAS, because of their depth of experience, background, recommendations and efficiency, it would appear to be in the best interest of the City of Paso Robles, and its wastewater users, to retain the services of Morro Group to provide necessary CEQA Documentation Services at a cost not to exceed. \$25,588.

THEREFORE, BE IT RESOLVED AS FOLLOWS:

SECTION 1. The City Council of the City of Paso Robles does approve a one time supplemental budget appropriation from the Sewer Enterprise Fund in the amount of \$28,588 (\$25,588, plus a \$3,000 contingency) to budget account No. 601-910-5224-683; and

SECTION 2. The City Council does hereby award a contract to Morro Group for CEQA Documentation Services associated with the future rehabilitation of the Paso Robles Wastewater Treatment Plant and authorizes the City Manager to execute the contract.

PASSED AND ADOPTED by the City Council of the City of Paso Robles this 4th day of November 2008 by the following votes:

AYES:  
NOES:  
ABSTAIN:  
ABSENT:

---

Frank R. Mecham, Mayor

ATTEST:

---

Deborah D. Robinson, Deputy City Clerk